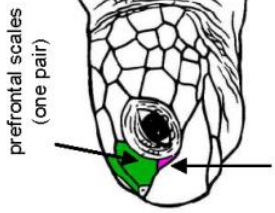
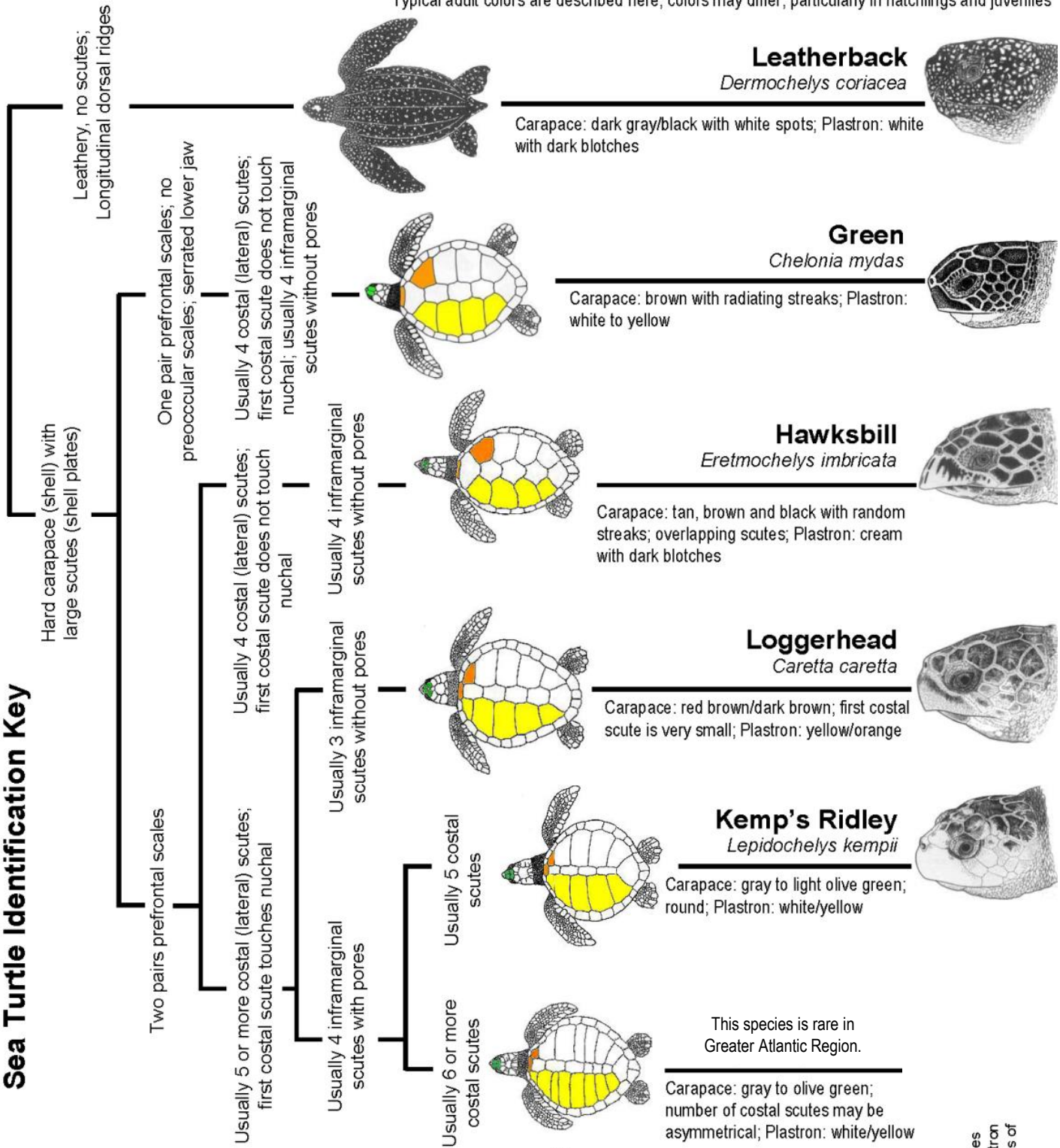
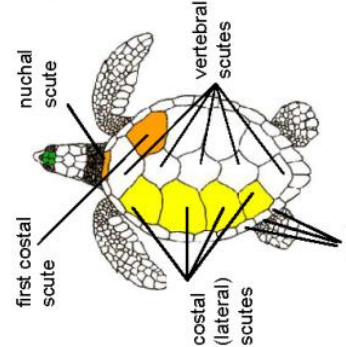


Sea Turtle Identification Key

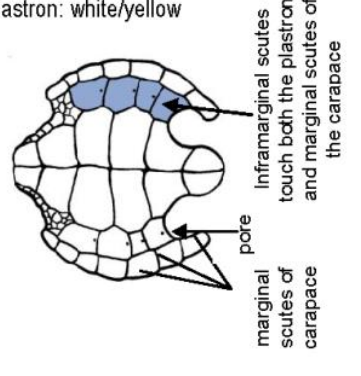
Typical adult colors are described here; colors may differ, particularly in hatchlings and juveniles



Dorsal View (Carapace)



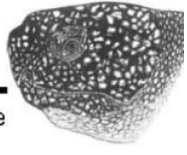
Ventral View (Plastron)



Leatherback

Dermochelys coriacea

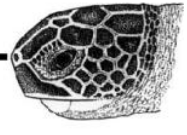
Carapace: dark gray/black with white spots; Plastron: white with dark blotches



Green

Chelonia mydas

Carapace: brown with radiating streaks; Plastron: white to yellow



Hawksbill

Eretmochelys imbricata

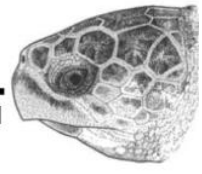
Carapace: tan, brown and black with random streaks; overlapping scutes; Plastron: cream with dark blotches



Loggerhead

Caretta caretta

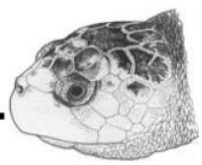
Carapace: red brown/dark brown; first costal scute is very small; Plastron: yellow/orange



Kemp's Ridley

Lepidochelys kempii

Carapace: gray to light olive green; round; Plastron: white/yellow

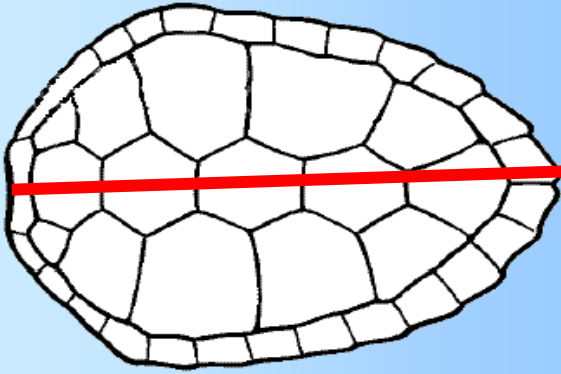


This species is rare in Greater Atlantic Region.

Carapace: gray to olive green; number of costal scutes may be asymmetrical; Plastron: white/yellow

All measurements should be recorded to the nearest 0.1 cm.

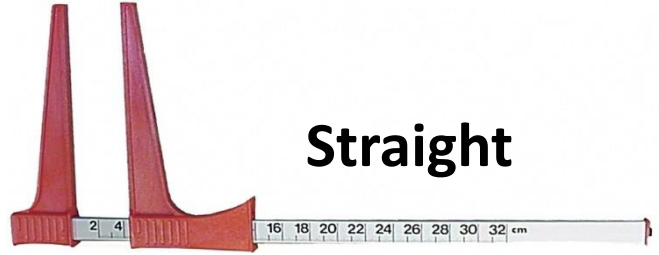
Carapace Length
Notch to Tip



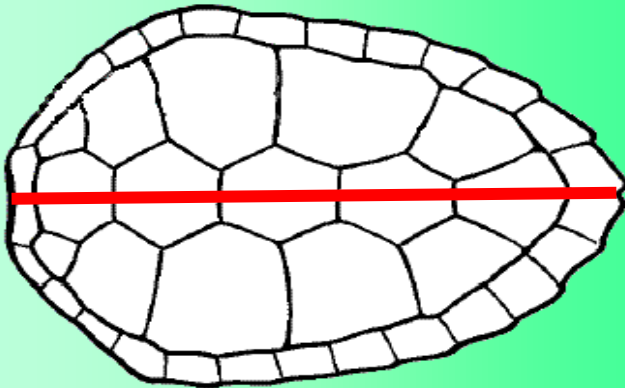
Curved



Straight



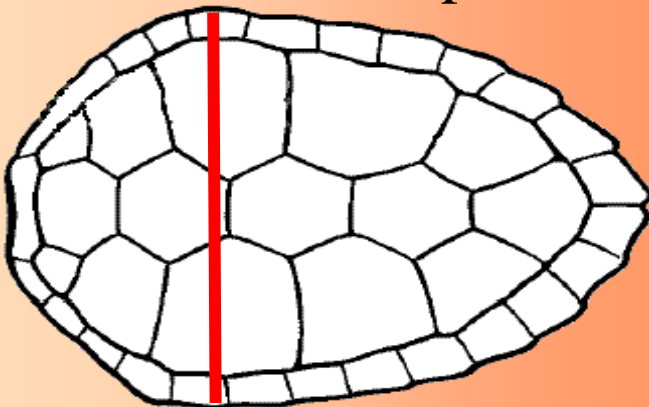
Carapace Length
Notch to Notch



Body
Depth



Carapace Width
Notch to Tip



PIT
TAG

