



# South Beach and Norton Point Dune Restoration: Extending the Life of a Barrier Beach Using Nature-based Solutions

Kristen Grubbs, Trustees Coastal Project Manager  
Jane Varkonda, Edgartown Conservation Agent





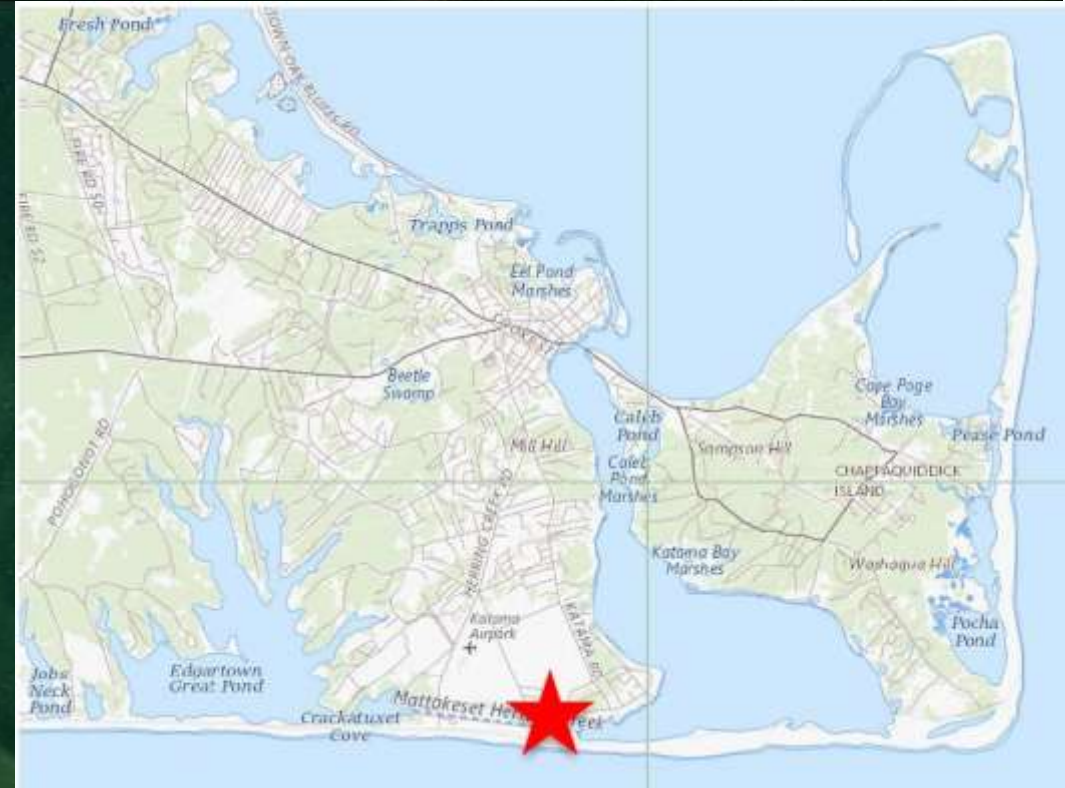
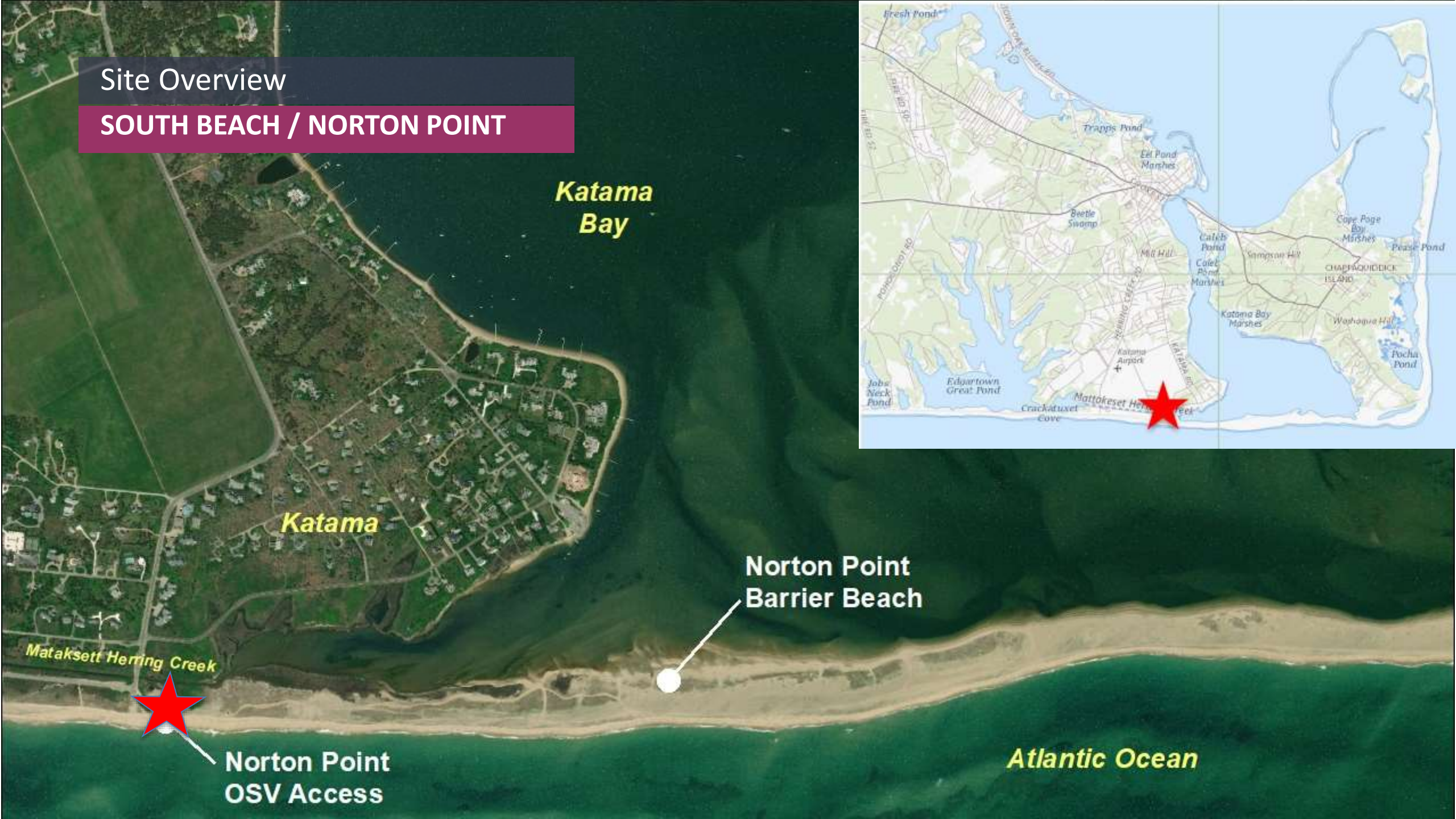
# It takes partners to protect a barrier beach...





## Site Overview

### SOUTH BEACH / NORTON POINT





# Norton Point

## BACKGROUND & SIGNIFICANCE

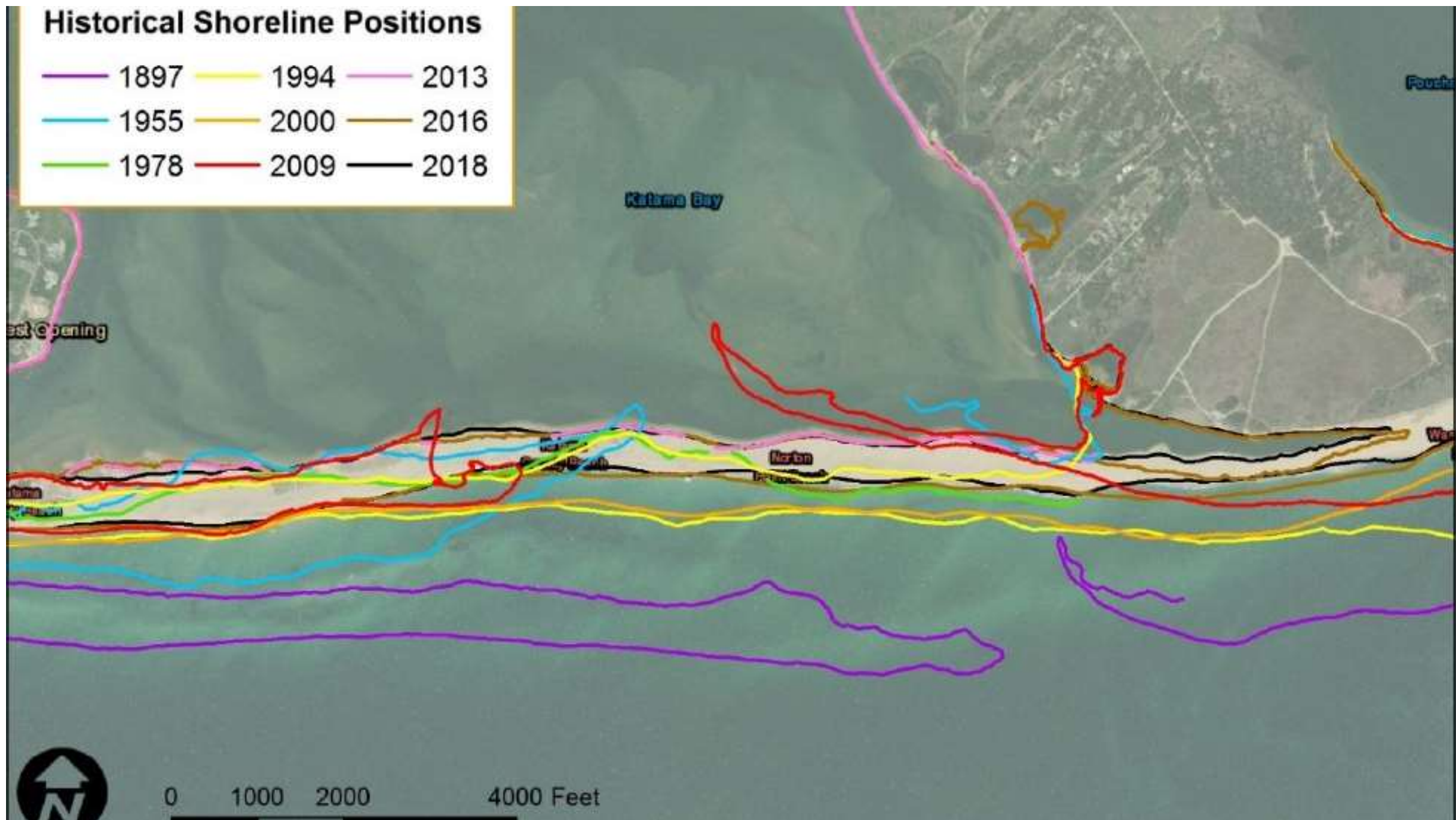
- Over 100,000 visitors annually
- Provides habitat for many local and migratory species, including rare and endangered
- Protects infrastructure and natural resources
- Extremely dynamic





## Historical Shoreline Positions

1897	1994	2013
1955	2000	2016
1978	2009	2018



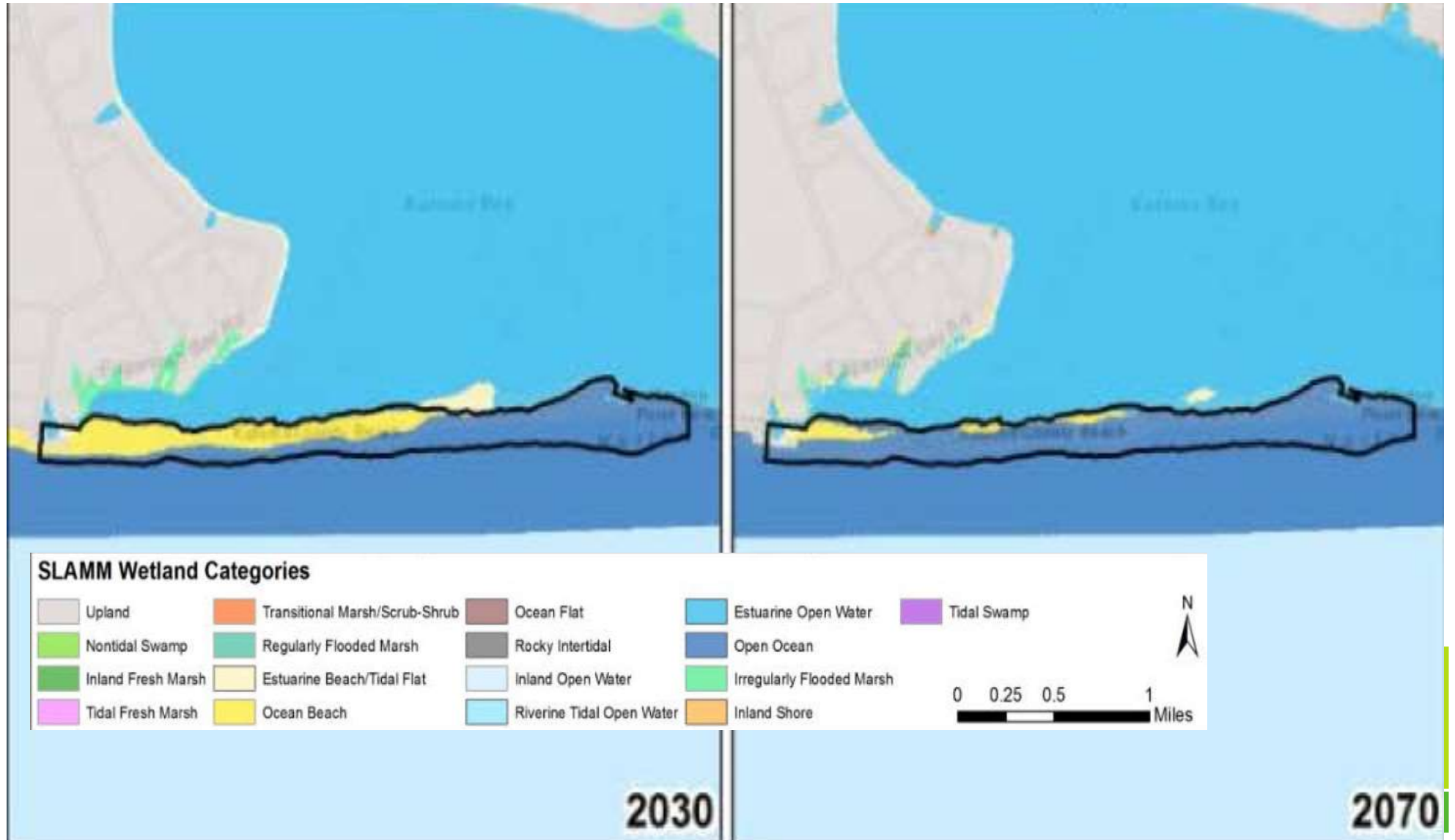
## Norton Point

### CLIMATE IMPACTS - EROSION





# INUNDATION RISK



# Adaptation Strategies

## SOUTH BEACH & NORTON POINT

**Proposed  
Relocated  
OSV Route**

A combination of strategies:

- Bathhouse relocation & asphalt removal
- Relocation of OSV trails
- Dune restoration with native plantings

**Mattakaset Herring Creek**

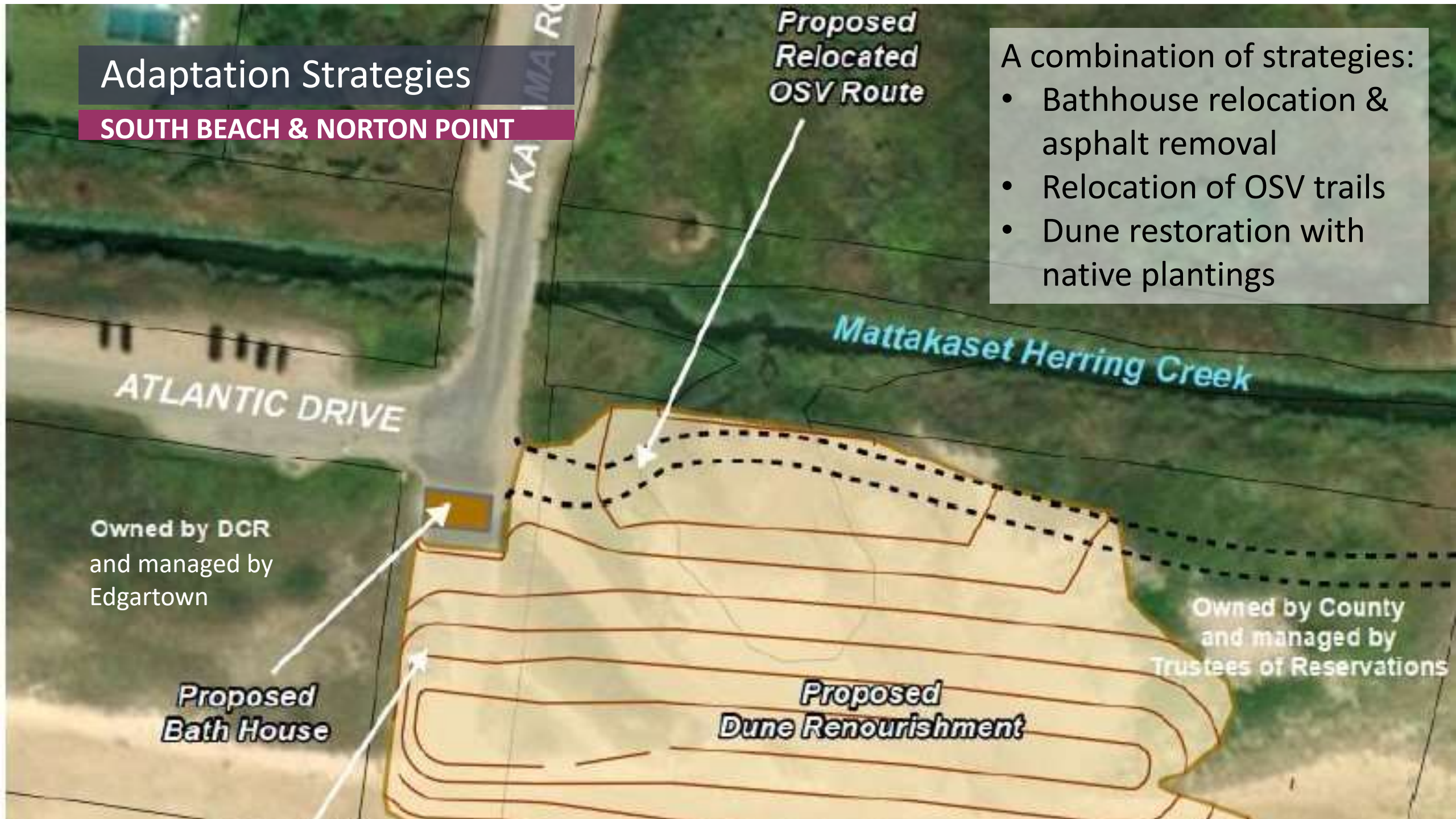
**ATLANTIC DRIVE**

Owned by DCR  
and managed by  
Edgartown

**Proposed  
Bath House**

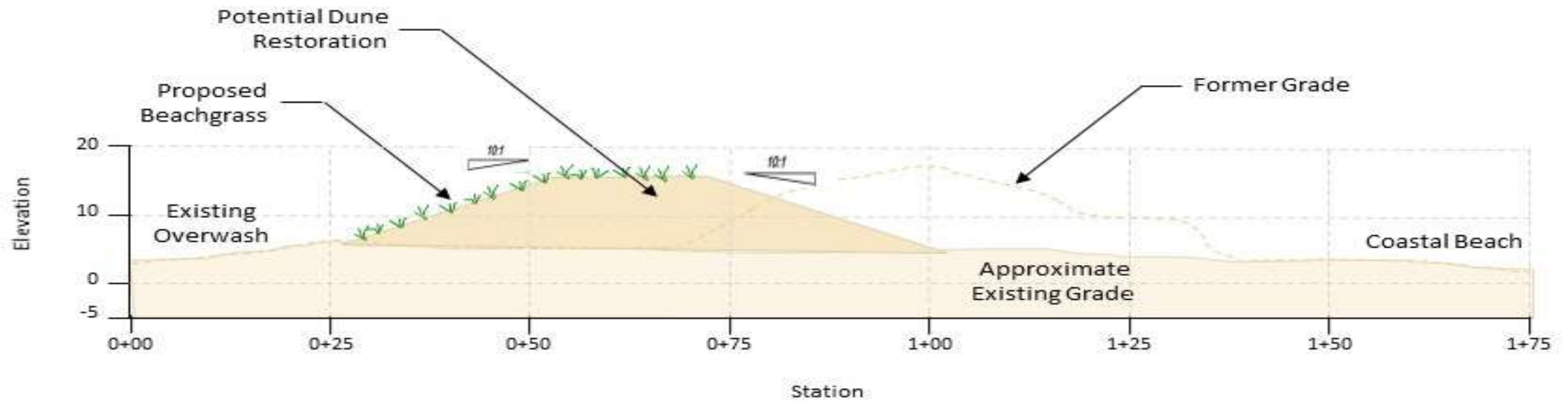
**Proposed  
Dune Renourishment**

Owned by County  
and managed by  
Trustees of Reservations





# Project Site





SUMMER 2012

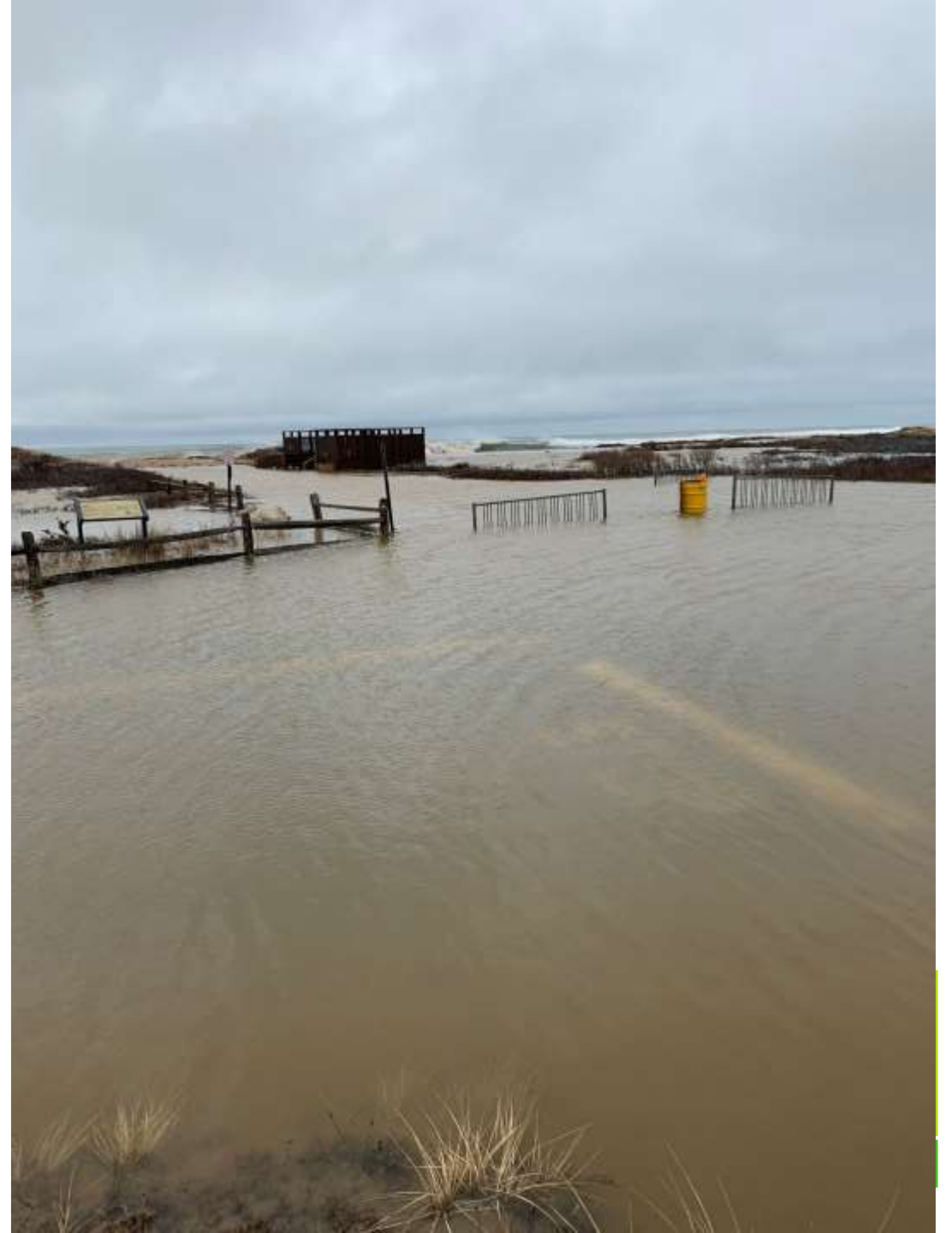
FIRST ADAPTATION PROJECT





February 2021 storm

PRE-CONSTRUCTION





## Conditions pre-construction





# Construction Begins

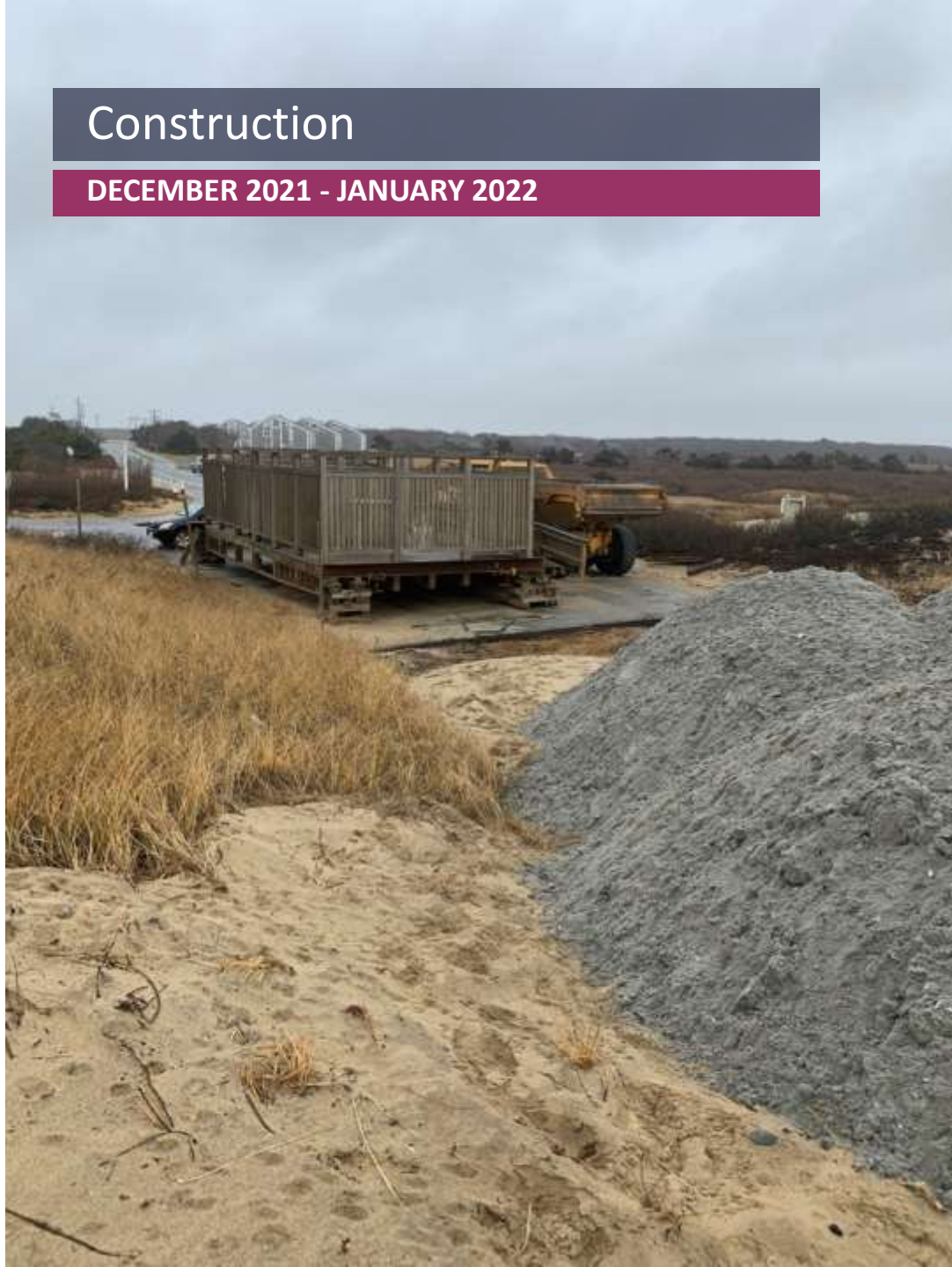
## BATH HOUSE RELOCATION





# Construction

DECEMBER 2021 - JANUARY 2022





Construction Dec 2021 – Jan 2022





# Construction





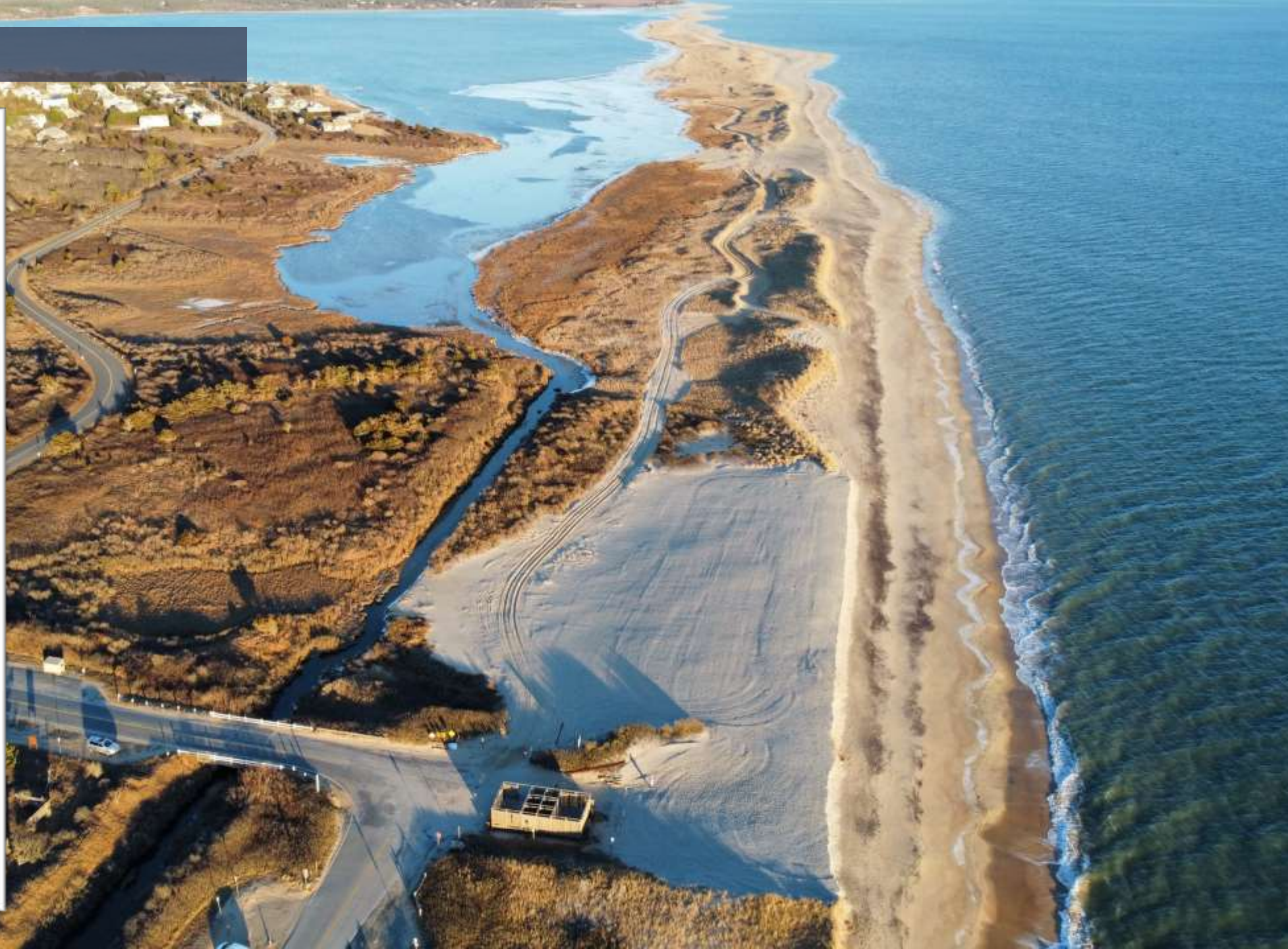
# Dune Nourishment

SHOWING 10:1 LANDWARD SLOPE





## Before and After









# Beach Grass & Woody Plants

MARCH 2022







Looking ahead

## PHASE 2 AND THE FUTURE

- adding an additional 5,622 cubic yards of sand east of Phase I along the existing dune
- grading to an elevation of 14 feet with 10:1 slopes
- planting 2.5 acres with native beach grass



# Using Nature-based Solutions to extend the life of a barrier beach

- Preserve critical habitat & access
- Improve resiliency and extend life of the beach
- Inform future projects

Thank you  
to all  
partners!

