

Collaborating with the Commercial Fishing Industry to Monitor Ocean Conditions off the Northeastern United States

George Maynard – NOAA/NMFS/NEFSC

Melissa Sanderson – Cape Cod Commercial Fishermen's Alliance



“Fishers” vs. “Fishermen”



Captain Therese
F/V Sea Anchor



Sarah
F/V Oceana

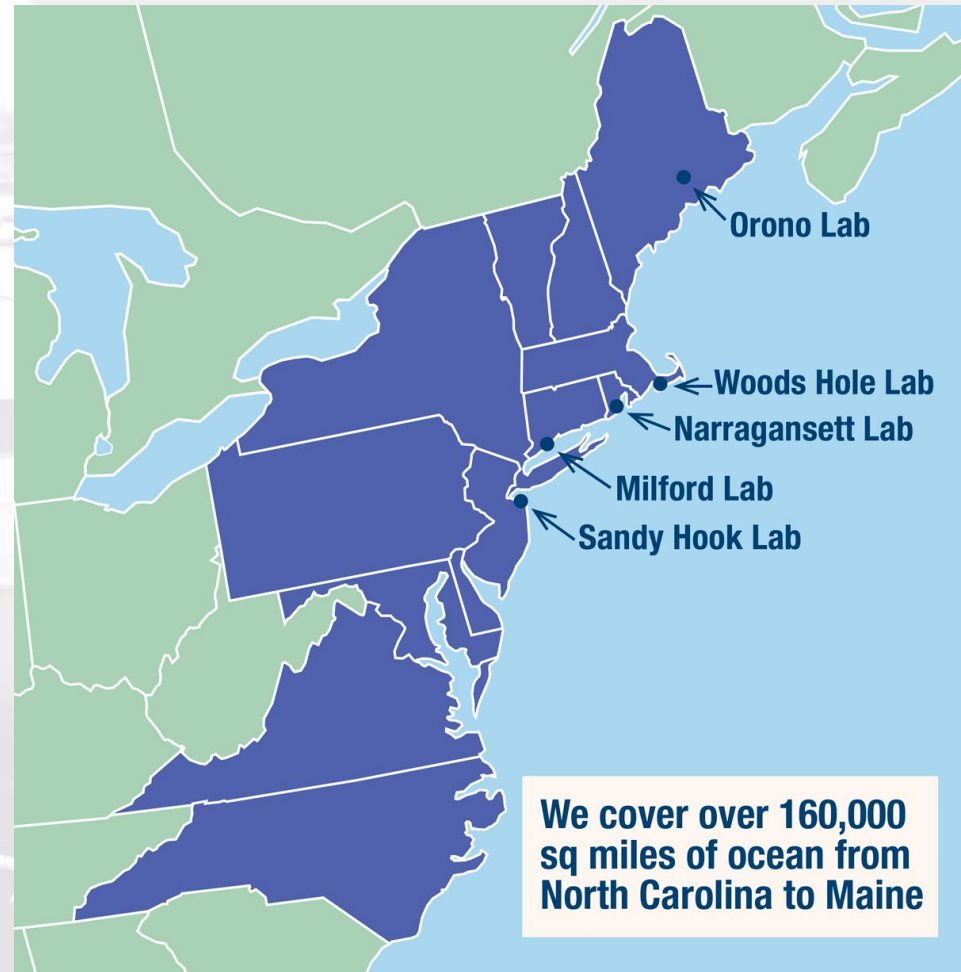


Capt. Olivia
F/V Buggin' Out



Stephanie
F/V Dawn T

What is the Northeast Fisheries Science Center?



Northeast Fisheries Science Center

- Staff conduct research on fishes, marine mammals, seabirds, oceanography, weather, etc. from the Canadian border to North Carolina
- Six Labs
 - Orono, ME (Protected Species)
 - Falmouth, MA (Fisheries Observing)
 - Woods Hole, MA (Main campus)
 - Narragansett, RI (Apex Predators, Cooperative Research)
 - Milford, CT (Aquaculture)
 - Sandy Hook, NJ (Estuaries and General Ecology)



NOAA
FISHERIES

Cape Cod Commercial Fishermen's Alliance

- Non profit organization that collaborates with fishing industry to ensure sustainable fishing businesses
 - Policy & Advocacy
 - Economic Development
 - Research
 - Workforce Training
 - Working Waterfronts
 - Public Education/Outreach



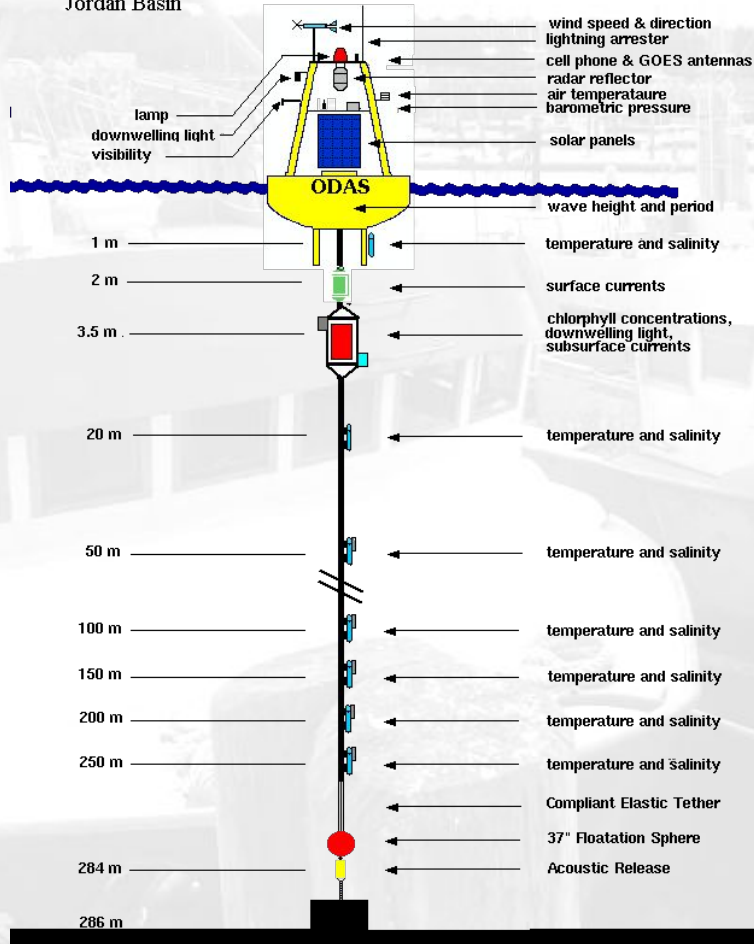
Small Boats. Big Ideas.





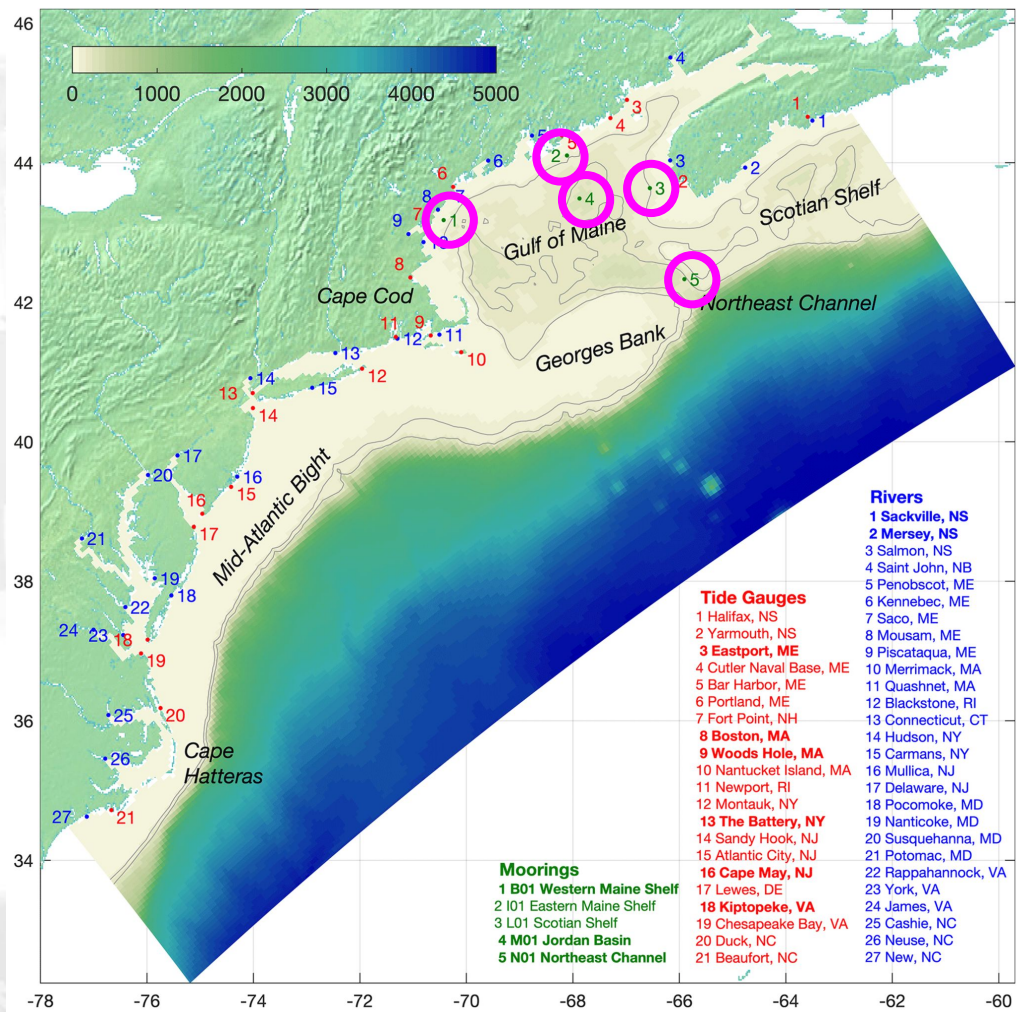
MOORING M

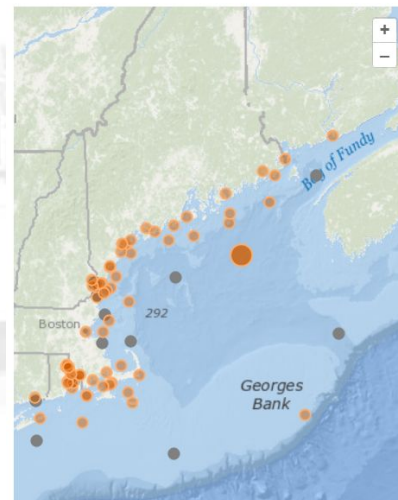
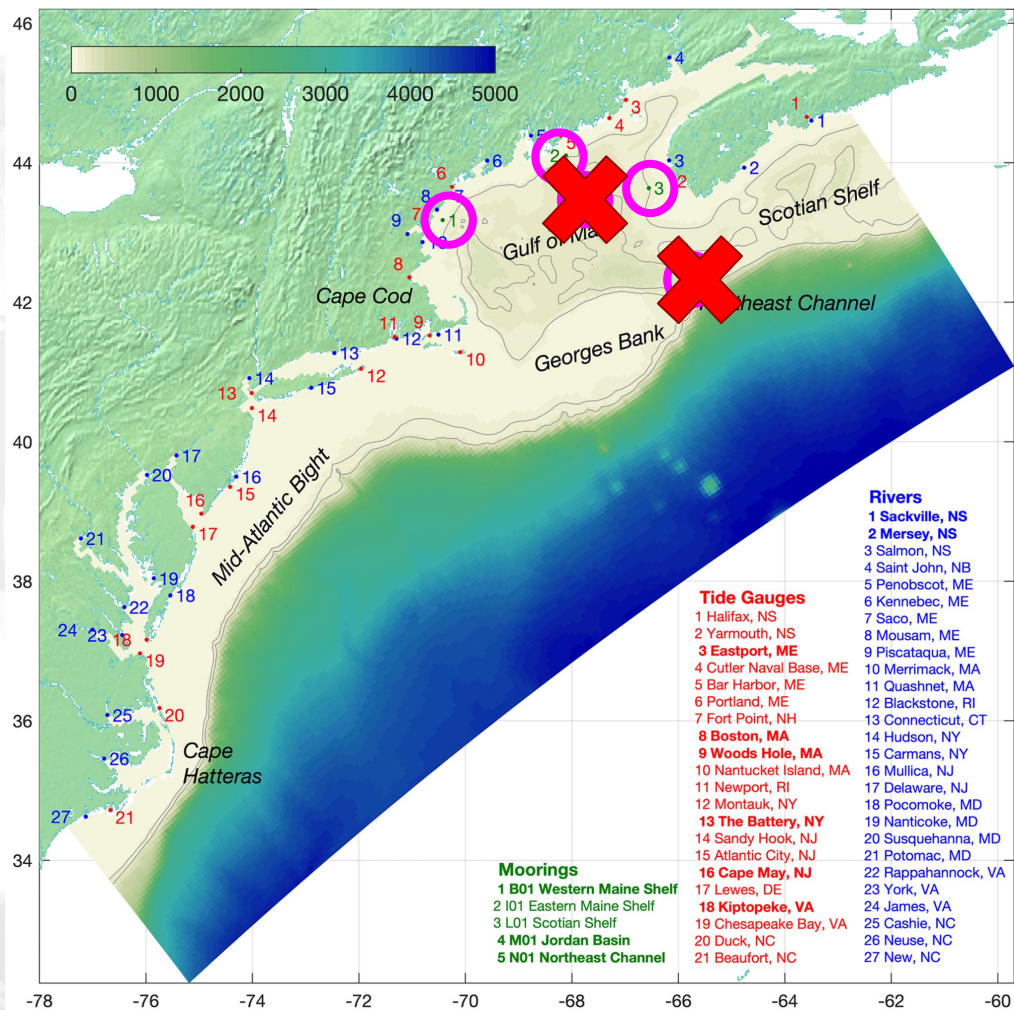
Jordan Basin



\$\$\$\$\$\$







Buoy M01 was struck by a vessel on 8/23/24 and is no longer reporting data. The buoy has been recovered, some data is being backfilled. Re-deployment is scheduled and awaiting a clear weather window (update: 12/10/24).

Station M01

Jordan Basin

NDBC ID: 44037

Lat: 43.5 **Lon:** -67.87

[University of Maine](#)

There is no recent data from M01

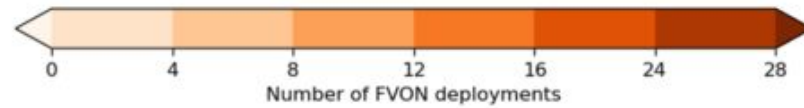
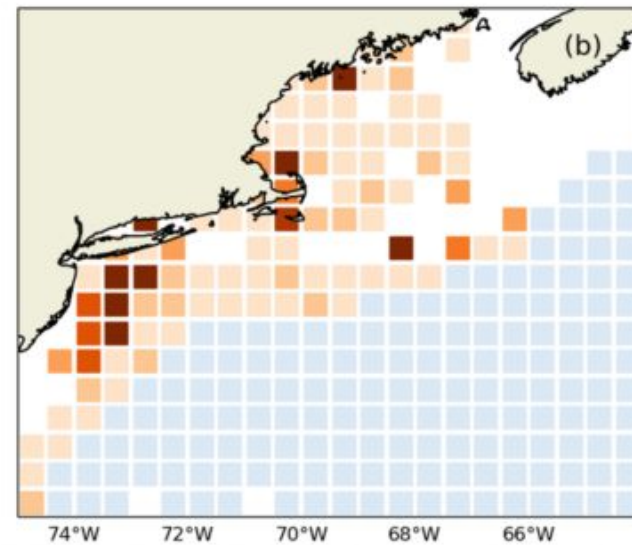
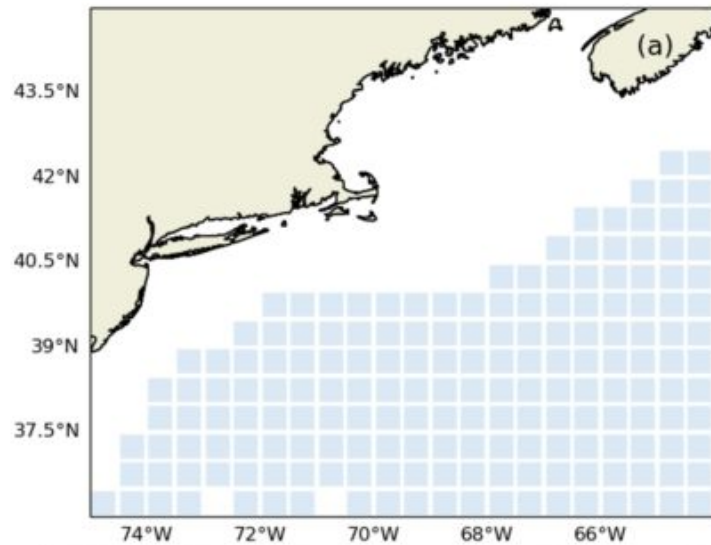
Unit system: Metric English

No Observations available

Latest Conditions

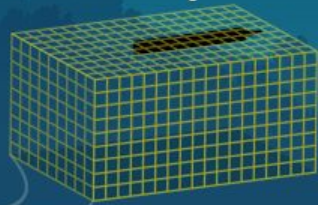
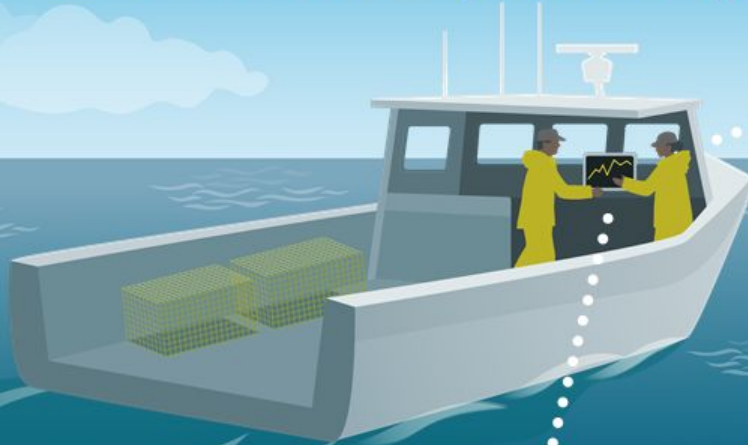
Forecasts

More info



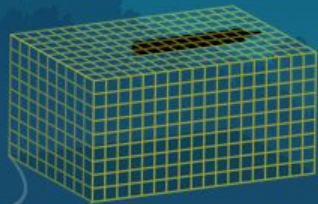
eMOLT

Environmental Monitors on Lobster Traps and Large Trawlers

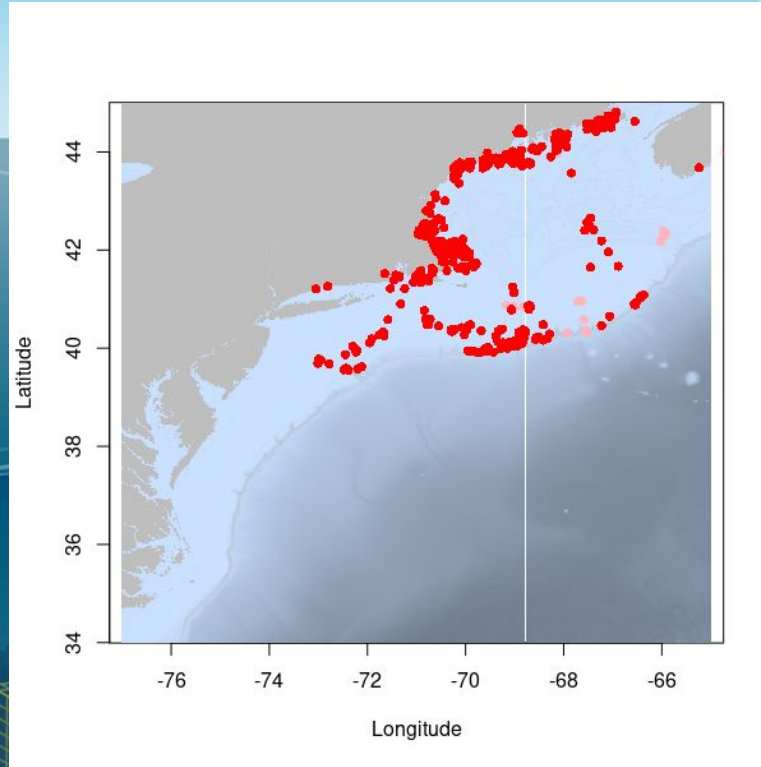


eMOLT

Environmental Monitors on
Lobster Traps and Large Trawlers

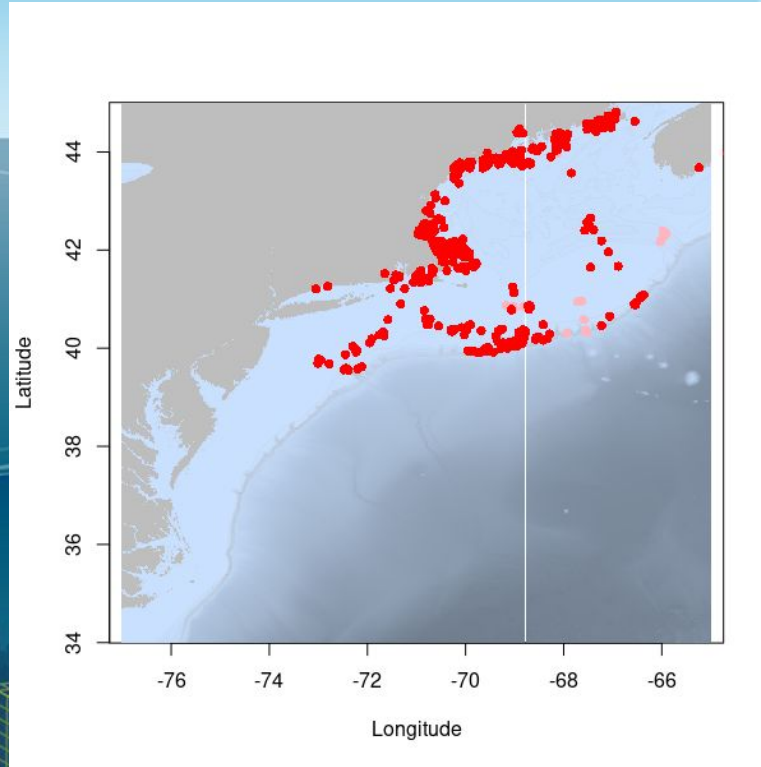


eMOLT Environmental Monitors on Lobster Traps and Large Trawlers



eMOLT Environmental Monitors on Lobster Traps and Large Trawlers

1995 – Present





Article | [OPEN](#)

Direct interaction between the Gulf Stream and the shelfbreak south of New England

Glen G. Gawarkiewicz , Robert E. Todd, Albert J. Plueddemann, Magdalena Andres & James P. Manning

Scientific Reports **2**, Article number: 553 (2012)

doi:10.1038/srep00553

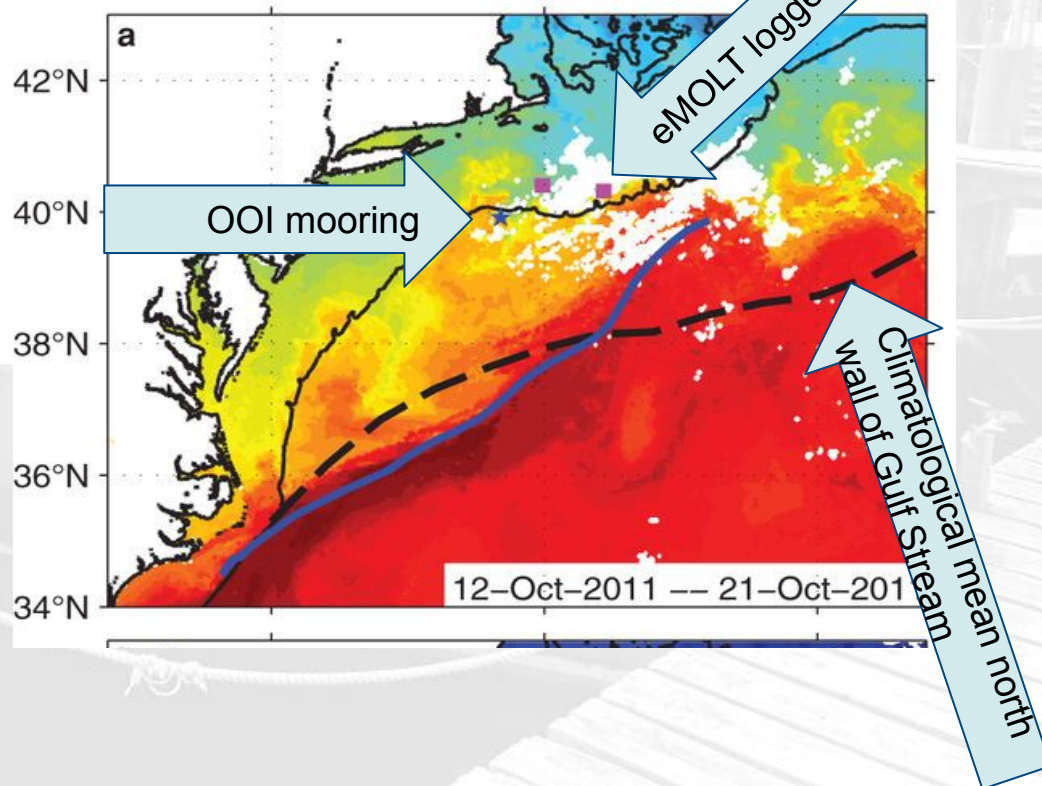
Download Citation

[Atmospheric science](#) [Bioceanography](#)

Received: 22 May 2012

Accepted: 19 July 2012

Published online: 02 August 2012





Volume 76, Issue 4
July-August 2019

Article Contents

Abstract

Introduction

Material and methods

Results

Discussion

Acknowledgements

References

Supplementary data

JOURNAL ARTICLE

A model-based approach to incorporate environmental variability into assessment of a commercial fishery: a case study with the American lobster fishery in the Gulf of Maine and Georges Bank

Kisei R Tanaka , Jie Cao , Burton V Shank, Samuel B Truesdell, Mackenzie D Mazur, Luoliang Xu, Yong Chen

ICES Journal of Marine Science, Volume 76, Issue 4, July-August 2019,
Pages 884–896, <https://doi.org/10.1093/icesjms/fsz024>

Published: 22 February 2019 **Article history** ▼

 PDF  Split View  Cite  Permissions  Share ▼

Abstract

Changes in bottom-up forcing are fundamental drivers of fish population dynamics. Recent literature has highlighted the need to incorporate the role of dynamic environmental conditions in stock assessments as a key step towards adaptive fishery management. Combining a bioclimate envelope model and a population dynamic model, we propose a model-based approach that can incorporate ecosystem products into single-species stock assessments. The

Atlantic States Marine Fisheries Commission

*2020 American Lobster Benchmark Stock Assessment
and Peer Review Report*



Accepted for Management Use
by the American Lobster Management Board
October 19, 2020



Sustainable and Cooperative Management of Atlantic Coastal Fisheries



Volume 76, Issue 4
July-August 2019

Article Contents

Abstract

Introduction

Material and methods

Results

Discussion

Acknowledgements

References

Supplementary data

JOURNAL ARTICLE

A model-based approach to incorporate environmental variability into assessment of a commercial fishery: a case study with the American lobster fishery in the Gulf of Maine and Georges Bank

Kisei R Tanaka ✉, Jie Cao ✉, Burton V Shank, Samuel B Truesdell, Mackenzie D Mazur, Luoliang Xu, Yong Chen

ICES Journal of Marine Science, Volume 76, Issue 4, July-August 2019, Pages 884–896, <https://doi.org/10.1093/icesjms/fsz024>

Published: 22 February 2019 **Article history** ▼

PDF Split View Cite Permissions Share ▼

Abstract

Changes in bottom-up forcing are fundamental drivers of fish population dynamics. Recent literature has highlighted the need to incorporate the role of dynamic environmental conditions in stock assessments as a key step towards adaptive fishery management. Combining a bioclimate envelope model and a population dynamic model, we propose a model-based approach that can incorporate ecosystem products into single-species stock assessments. The

Atlantic States Marine Fisheries Commission

*2020 American Lobster Benchmark Stock Assessment
and Peer Review Report*



Accepted for Management Use
by the American Lobster Management Board
October 19, 2020

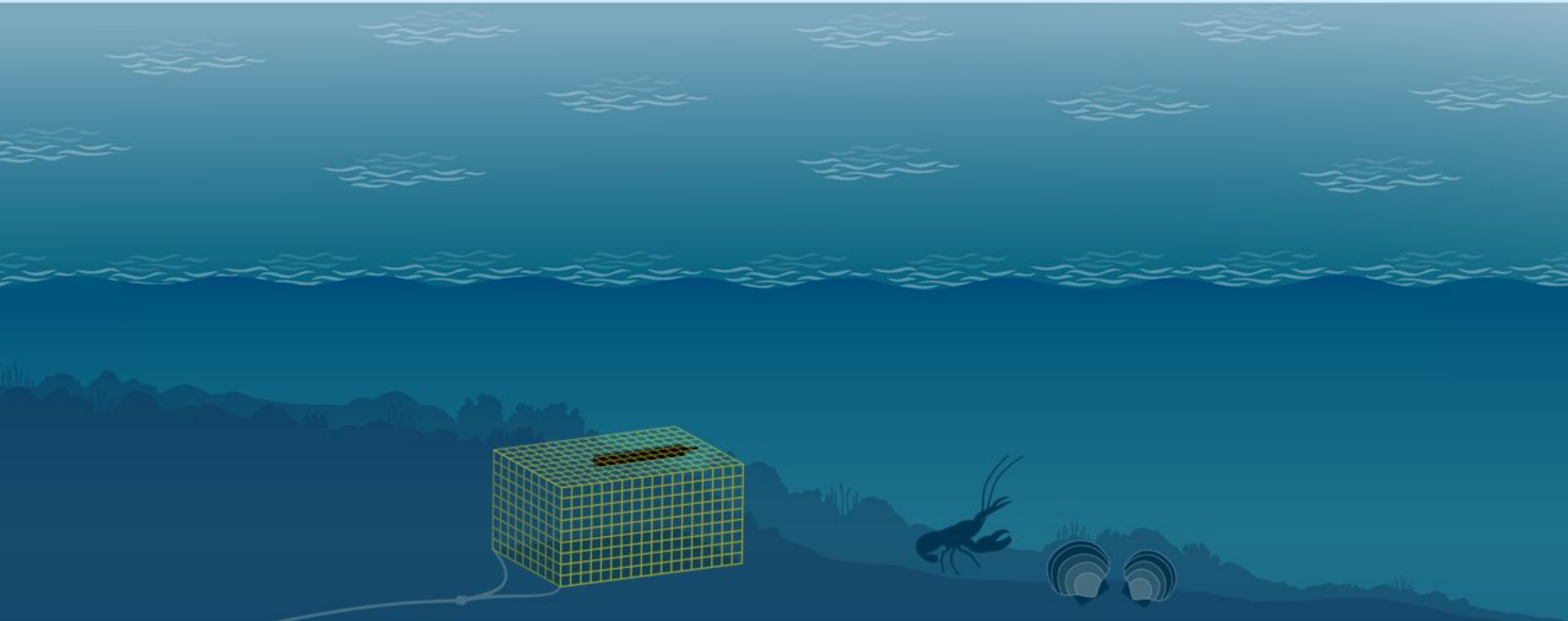


Sustainable and Cooperative Management of Atlantic Coastal Fisheries

**Including the
environmental covariate
decreased uncertainty,
increasing the amount of
lobster available to
harvest**

eMOLT

Environmental Monitors on
Lobster Traps and Large Trawlers



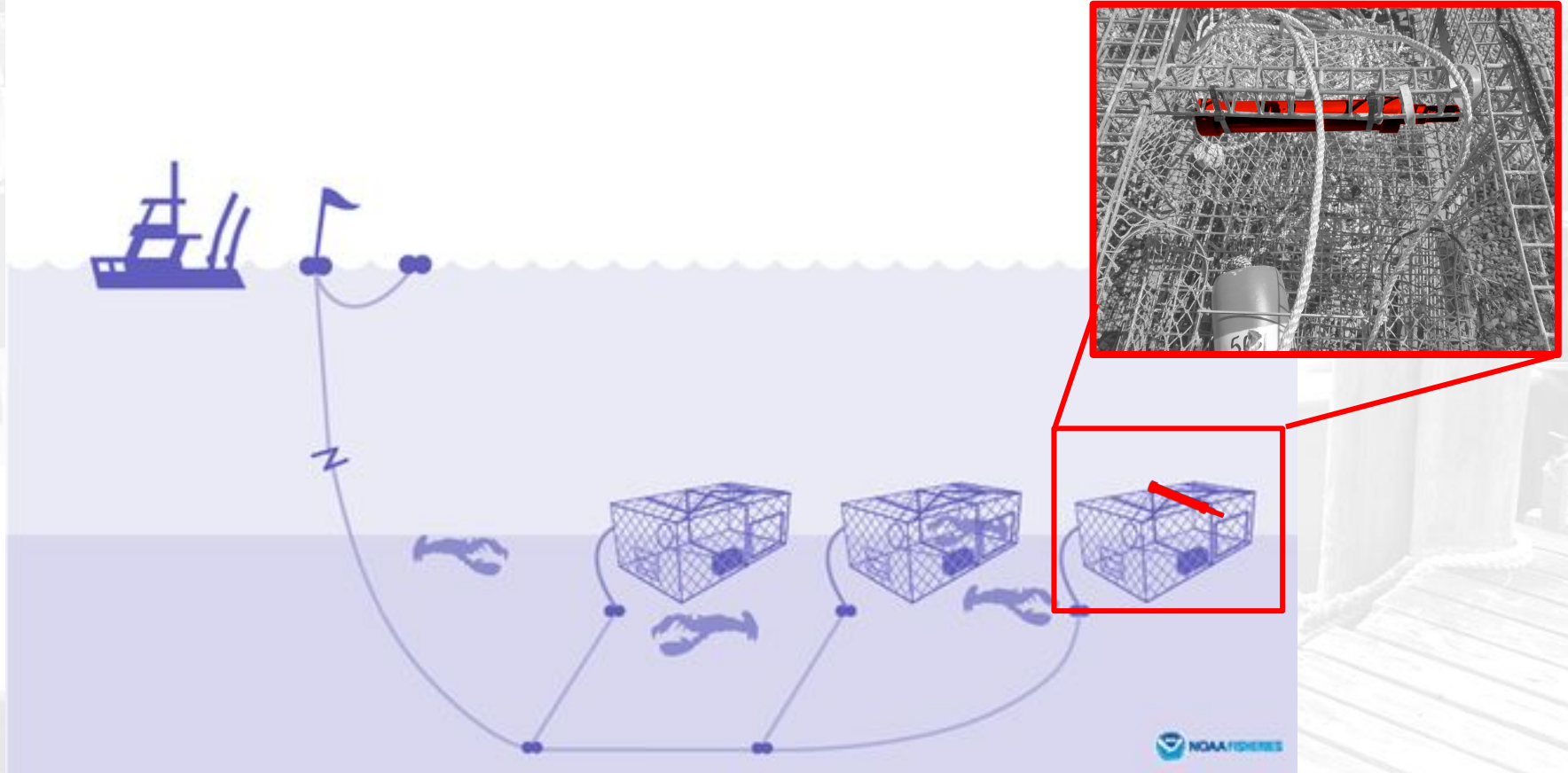
Temperature / Depth Profiling Loggers



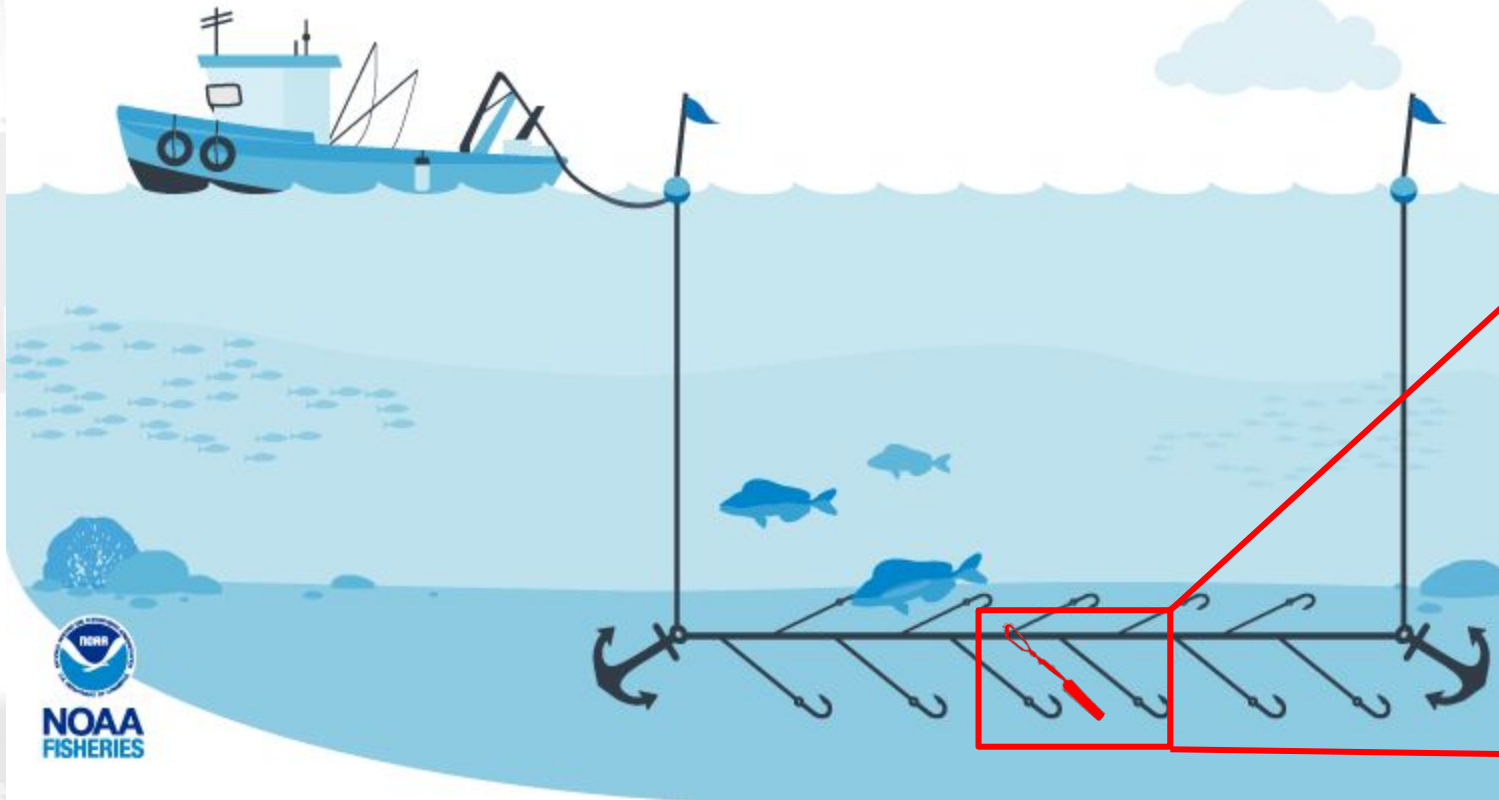
Dissolved Oxygen / Temperature Logger (no profiles)



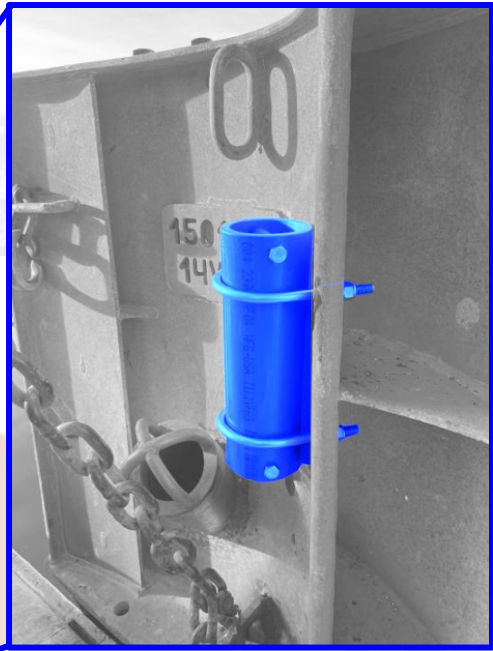
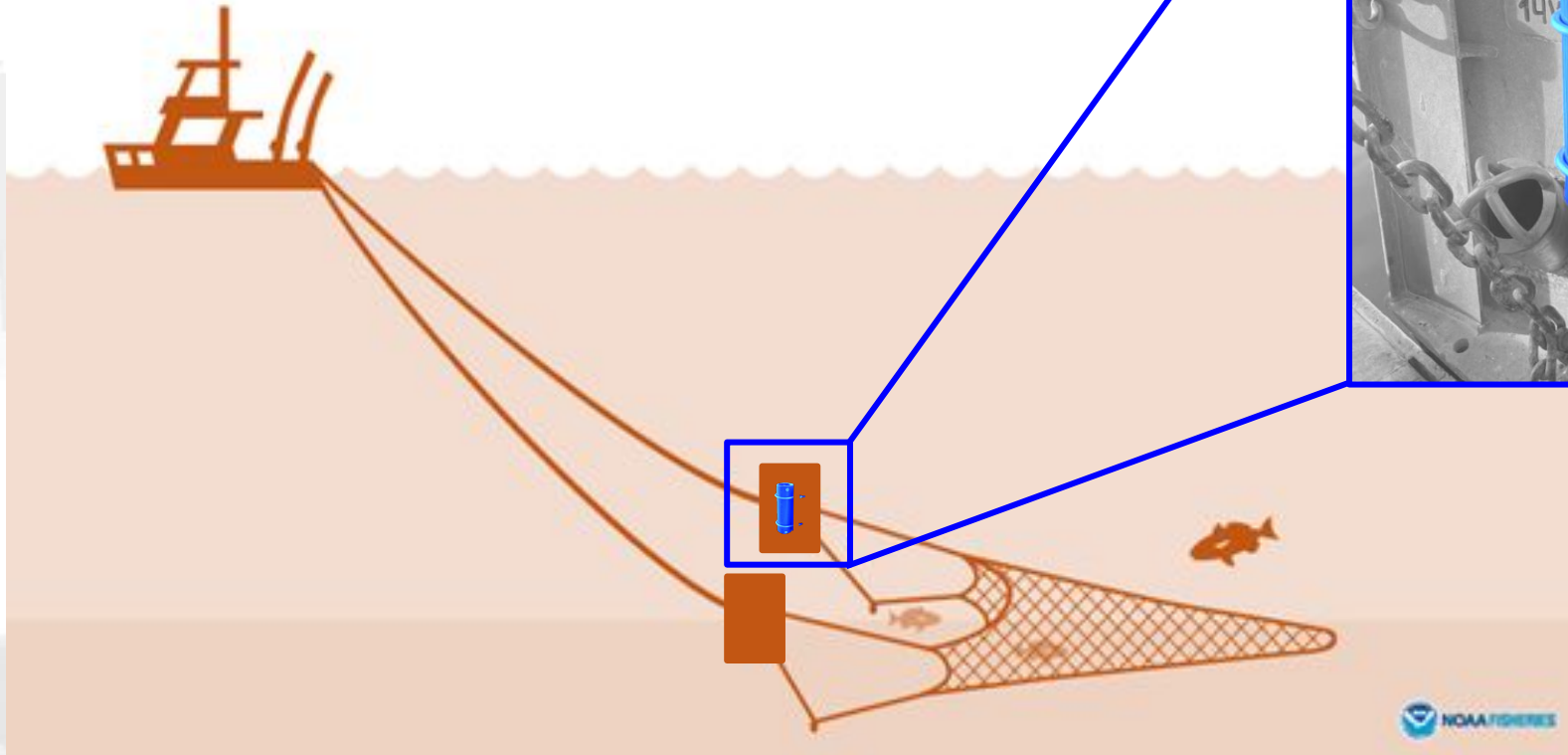
Traps / Pots (lobster, black sea bass, scup, tautog, whelk)



Bottom Longline (groundfish, tilefish)



Bottom Trawl (groundfish, squid, flats, mackerel)



Dredges (scallops, clams)



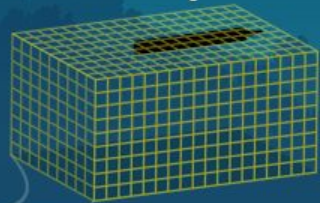
F/V Midnight Our



Huanxin aboard the F/V Atlantic

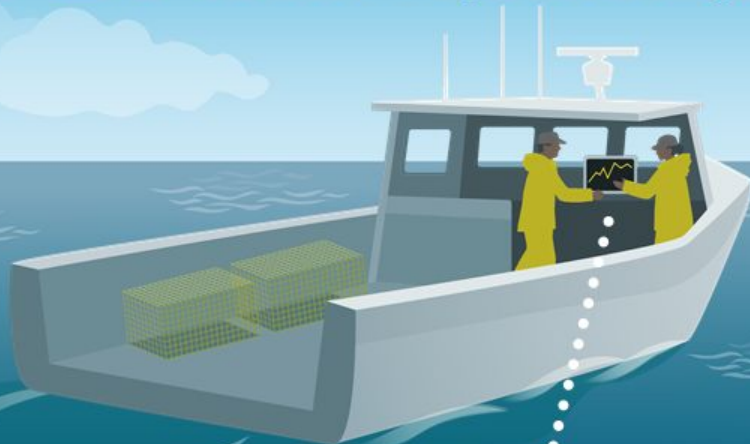
eMOLT

Environmental Monitors on
Lobster Traps and Large Trawlers



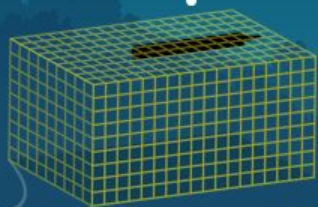
eMOLT

Environmental Monitors on
Lobster Traps and Large Trawlers

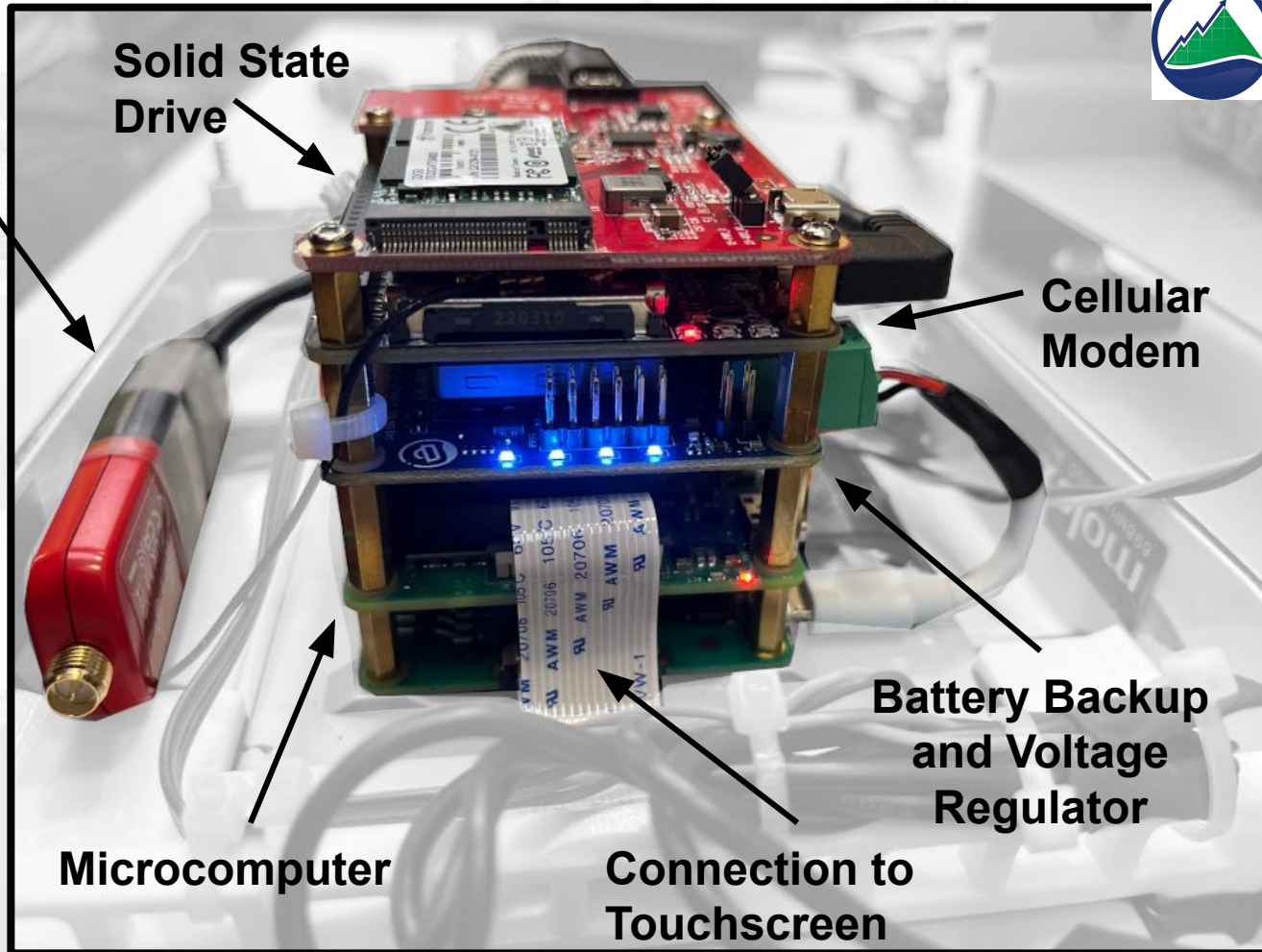


**Photo Credit: Stephanie Sykes,
F/V Dawn T, Chatham, MA**

eMOLT Environmental Monitors on Lobster Traps and Large Trawlers



Captain Nick, F/V Dawn T



GPS Receiver

**Optional
Bluetooth
Extension**

**Touchscreen
Deck Box**

F/V Atlantic Pearl



① Information



Details



Graphs



Models



Miss Linus



100%

searching for loggers



checking

internal radio

Apr 10 09:07:32

Information

Details

Graphs

Models



cell



5%

done 2409715



haul summary

Apr 05 2025 01:27

Apr 07 2025 11:27

0.13 fathoms

40.71 °F



busy

external radio

Apr 07 11:41:39

Information

Details

Graphs

Models

	logger	result	rerun
1	2406607	ok TDO Apr 09 16:06 at +0.0000, +0.0000	True
2	2406614	success Jul 29 22:28 at +41.7138, -70.6053	True
3			
4			
5			
6			
7			
8			

-
-

DDH 99999999

uptime 0:02:08

tech support

v. 4.0.88

Information

Details

Graphs

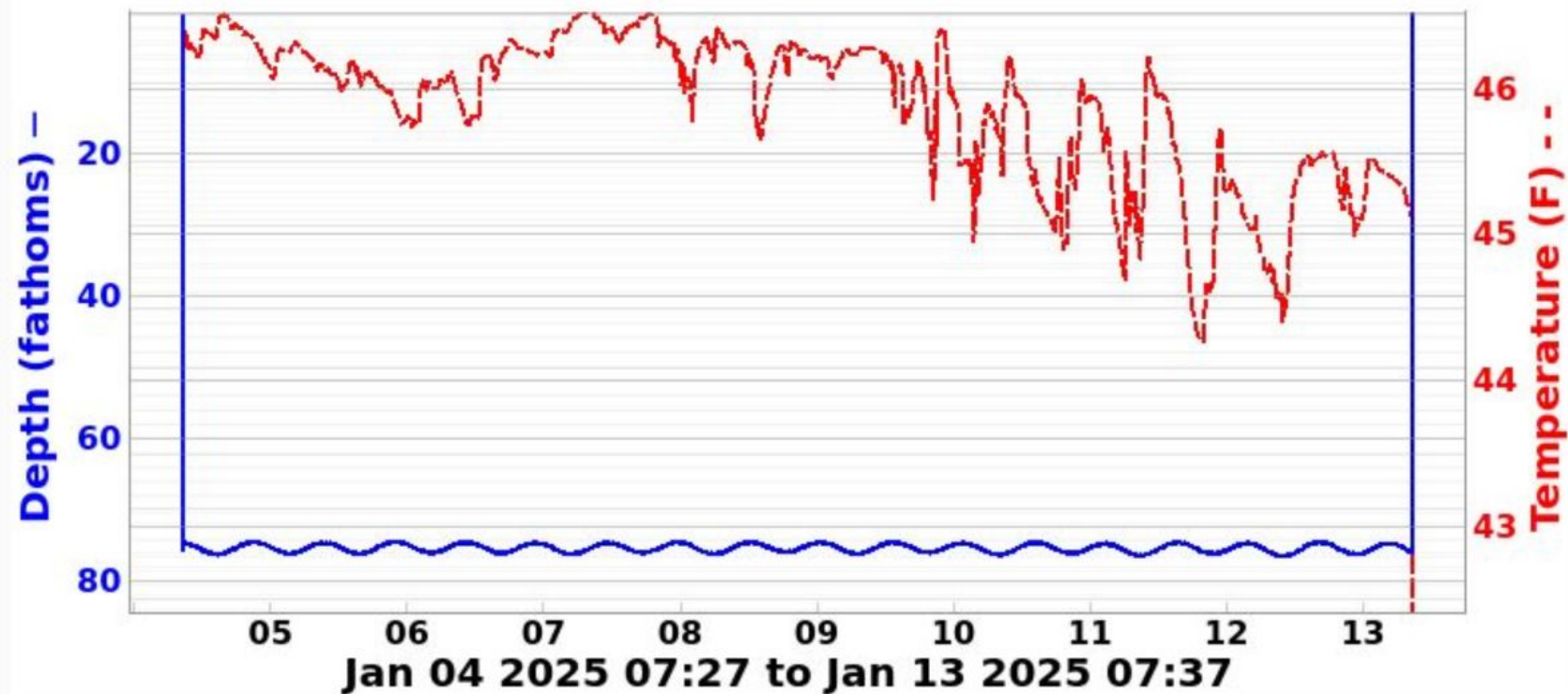
Models

reset

11111aa

hauls

last

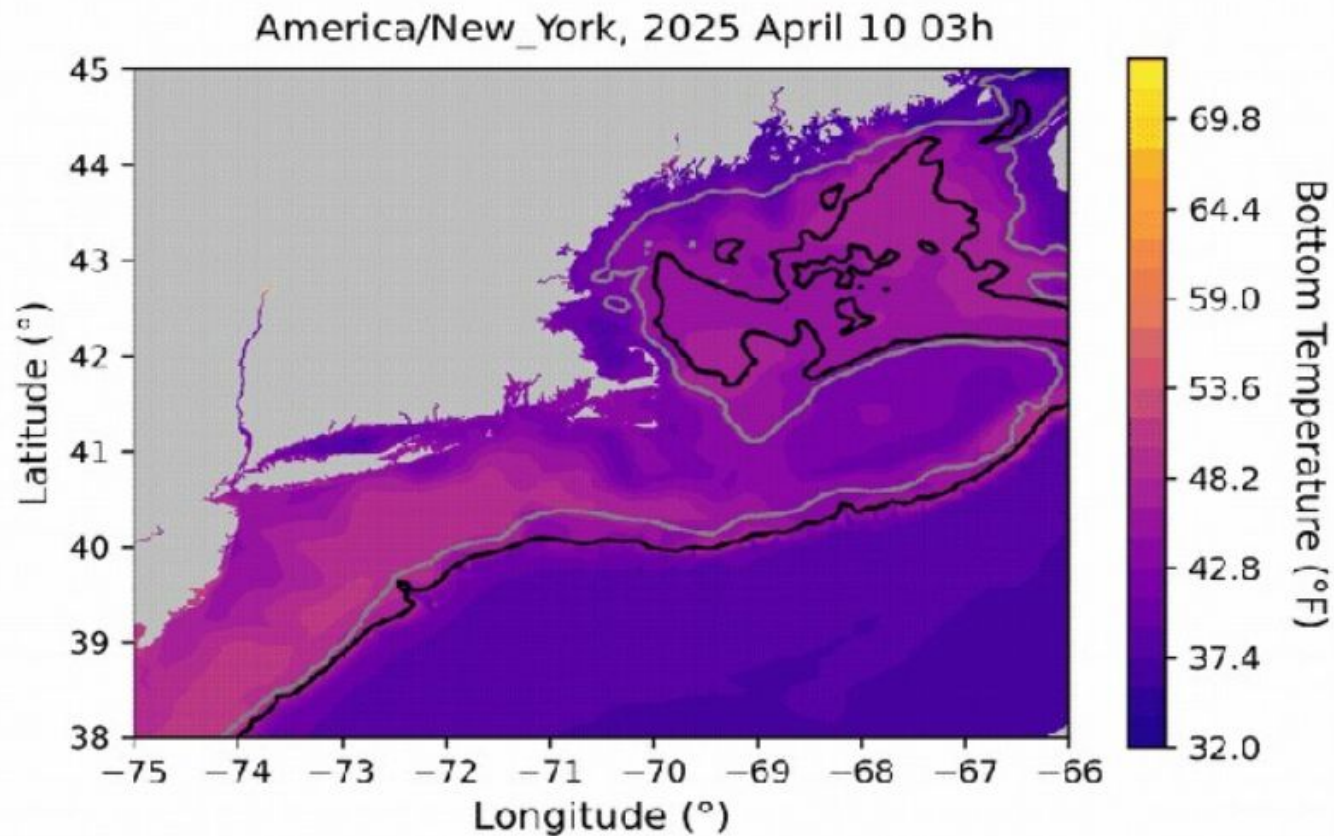


① Information

Details

Graphs

Models



V

ation



Details



Graphs



Models



Advanced



Setup



all

current

x

F0:5E:CD:25:9E:06 2406601

F0:5E:CD:25:9E:0F 2406602

F0:5E:CD:25:9E:44 2406603

F0:5E:CD:25:9D:A7 2406605

F0:5E:CD:25:A4:0C 2406607

F0:5E:CD:25:9C:9E 2406608



F0:5E:CD:25:A4:0C 2406607

load values

load

vessel

Miss Linus

forget (s)

86400

gear type

fixed

S3 uplink

group

skip in port

True

save values

cancel

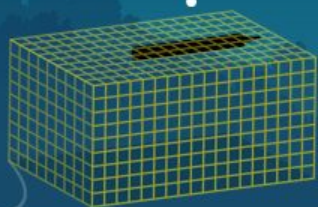
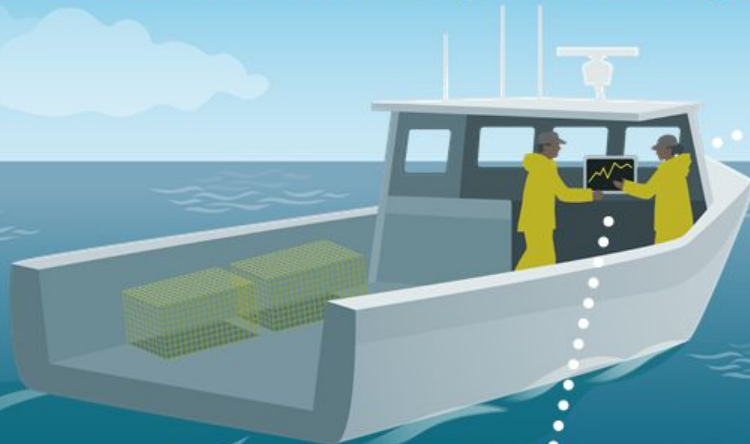
save

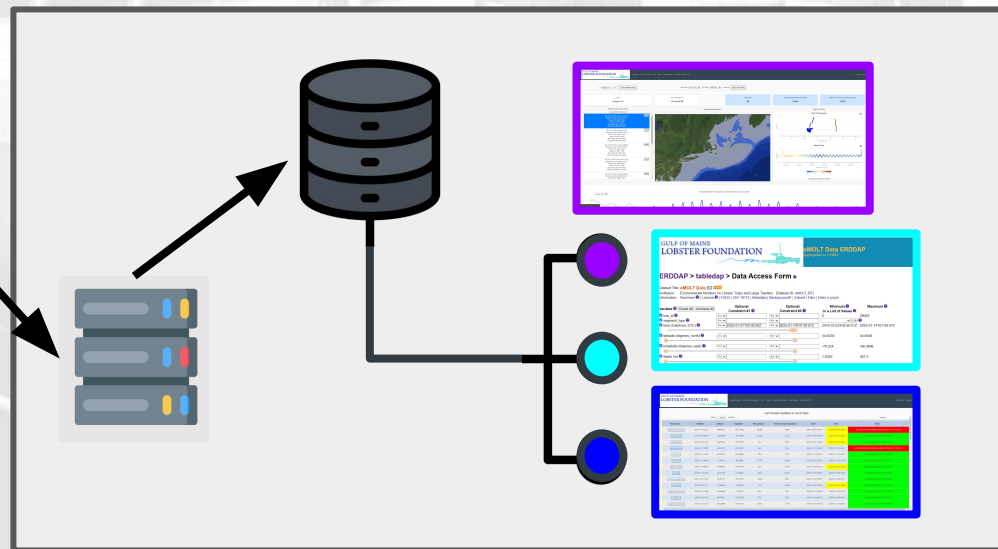
purge files

purge history

eMOLT

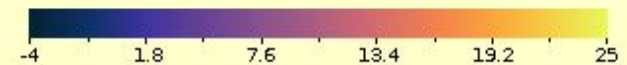
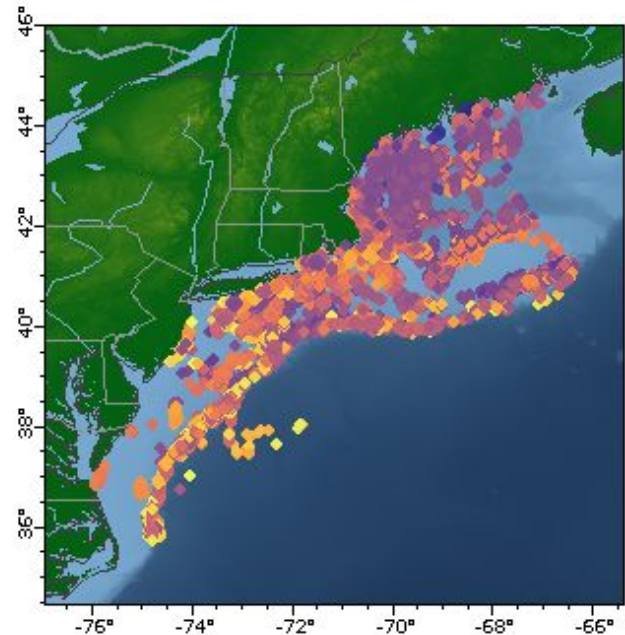
Environmental Monitors on
Lobster Traps and Large Trawlers





2025 eMOLT Data

- 145 vessels contributed data last year
- Home ports from Maine to North Carolina
- Nearly every commercial fishery in the Northeast is represented
 - Lobster
 - Gillnet
 - Longline (tub-trawl, tilefish, pelagic)
 - Fish pots
 - Bottom trawl
 - Scallop dredge
 - Clam dredge
- Nearly 22 million individual data points and 46,000 instrumented tows since 2018



● **Temperature (degree_C)**

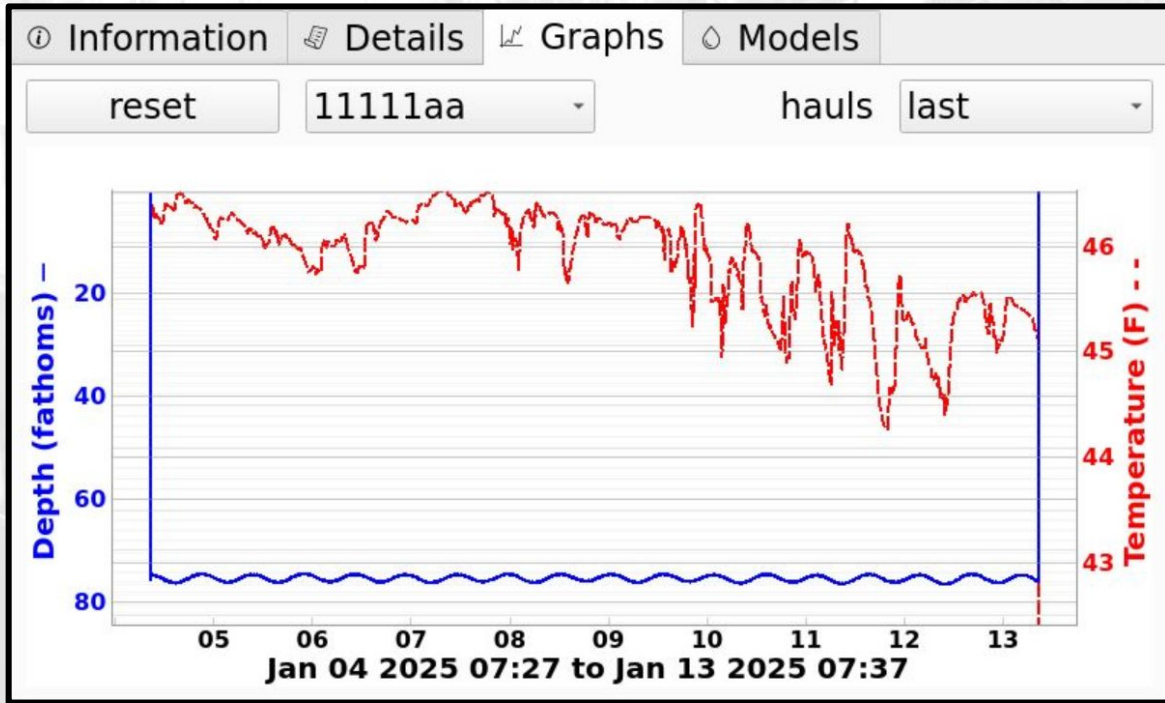
eMOLT data

(time>=2025-01-01T00:00:00Z, time<=2025-12-31T00:00:00Z)

Data courtesy of Environmental Monitors on Lobster Traps and Large Trawlers

DATA INTERPRETATION ACTIVITY

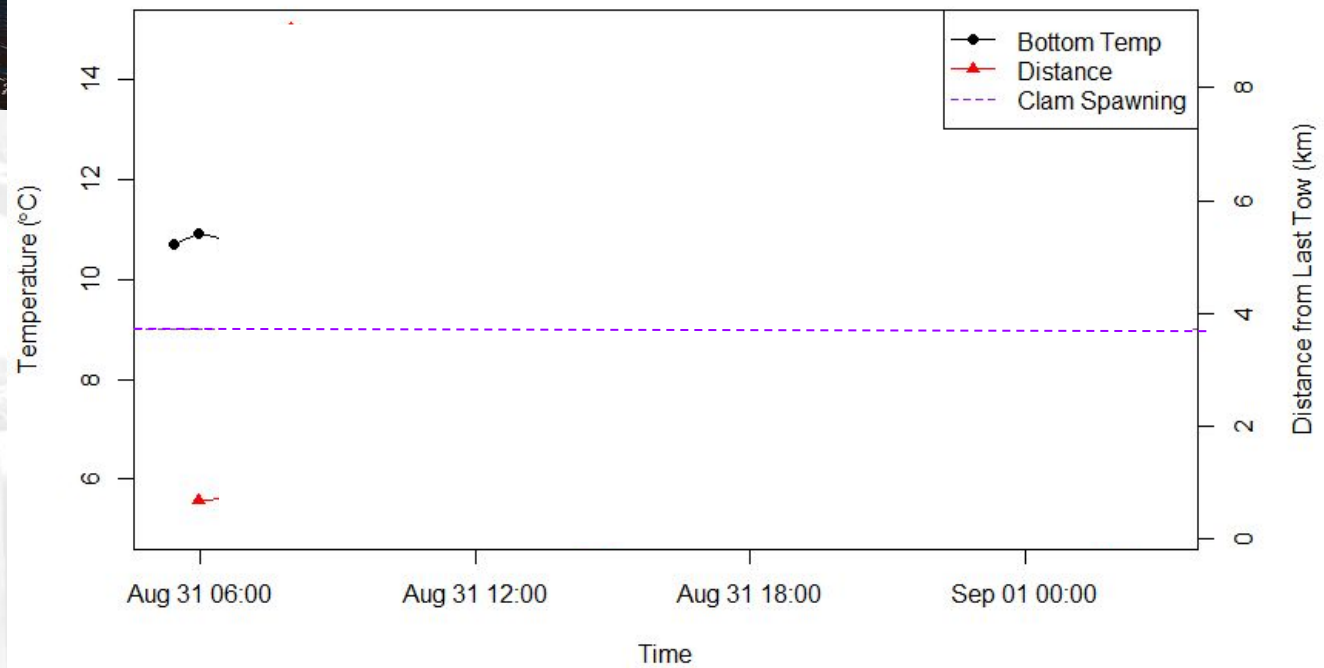
- Break into 6 groups of 4 or 5
- Turn on your DDH
- Review the screens on the DDH to see what the fishermen see after hauling gear.
- Go to “Graphs” and Identify Bottom Temperature and Thermocline
- How do you know if you’re looking at mobile or fixed gear?
- Go to “Models” to see regional predictions

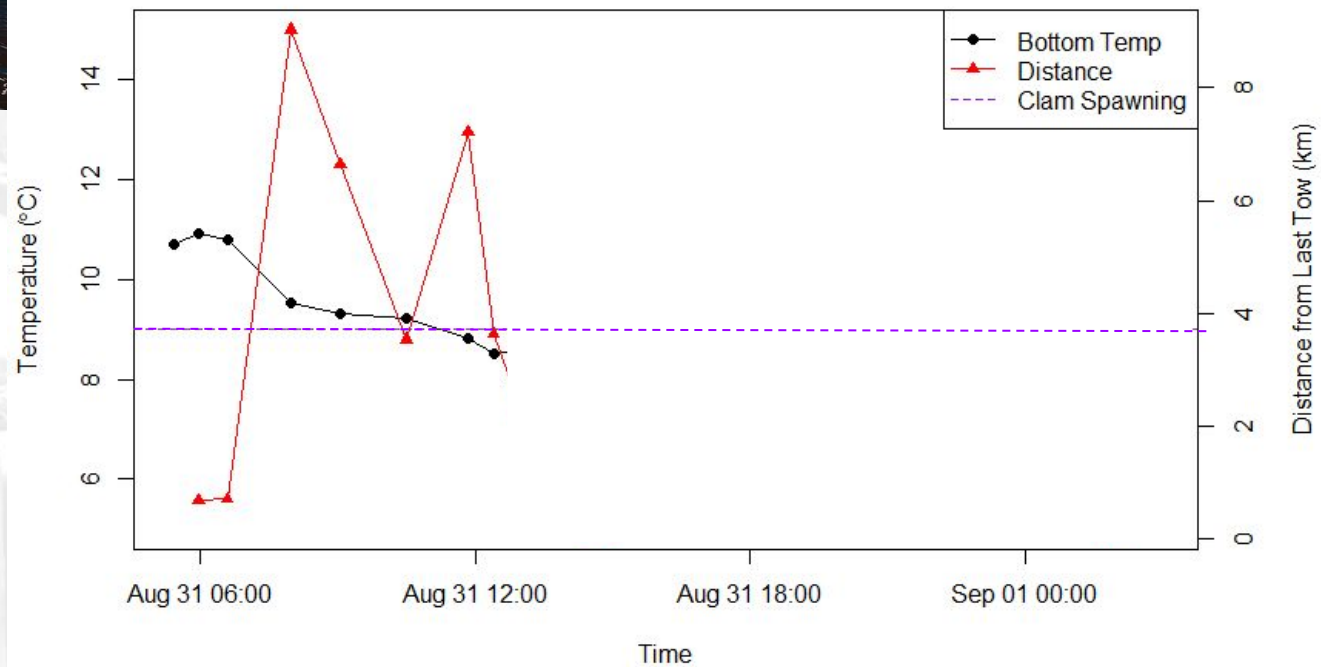


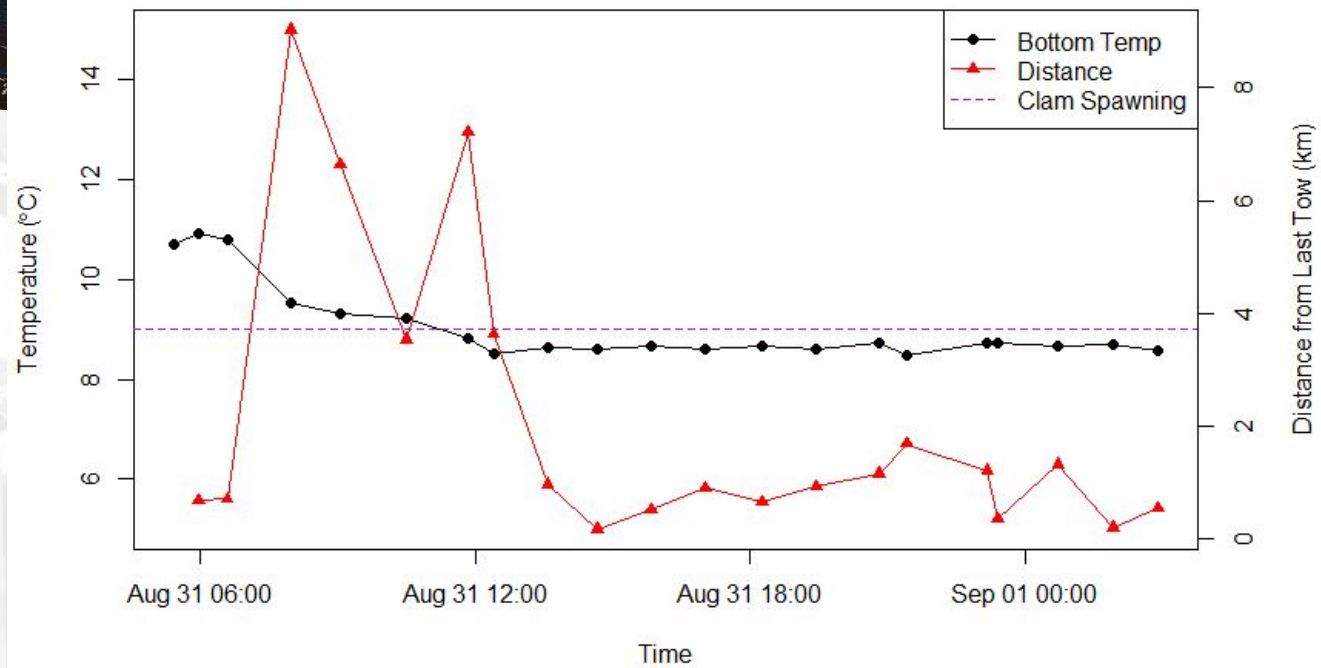
Do fishermen
use the data?



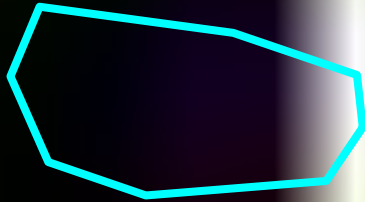
**Jim and Capt. Tony aboard the
scallop, F/V Kathryn Marie**

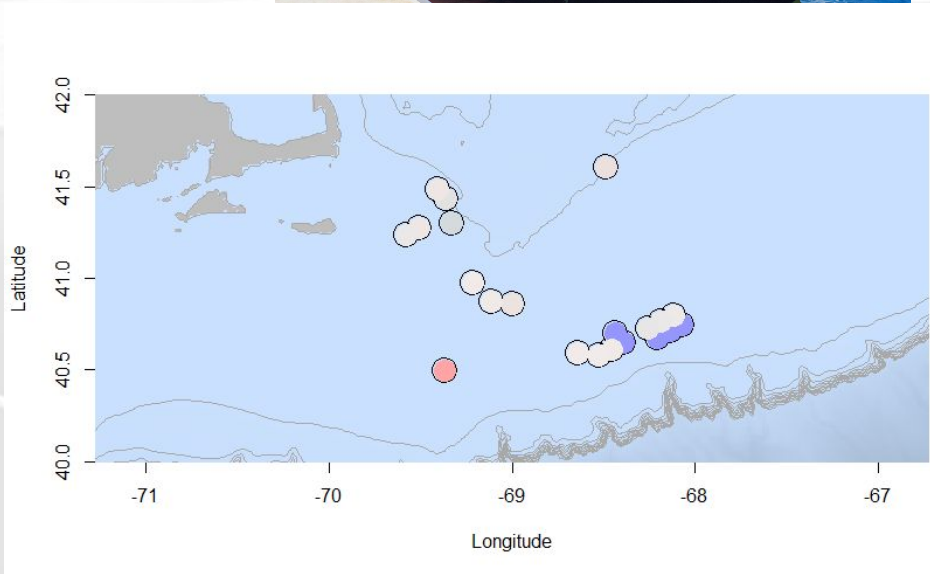
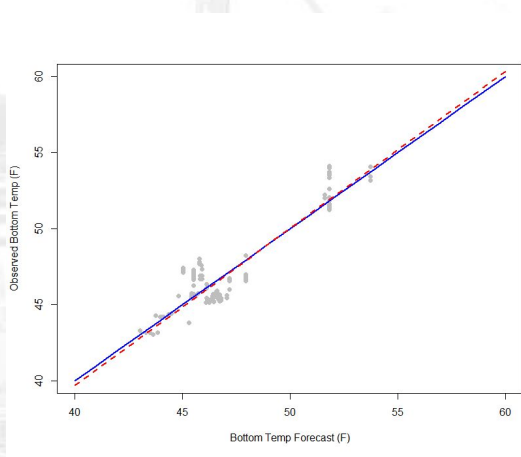






F/V Illusion

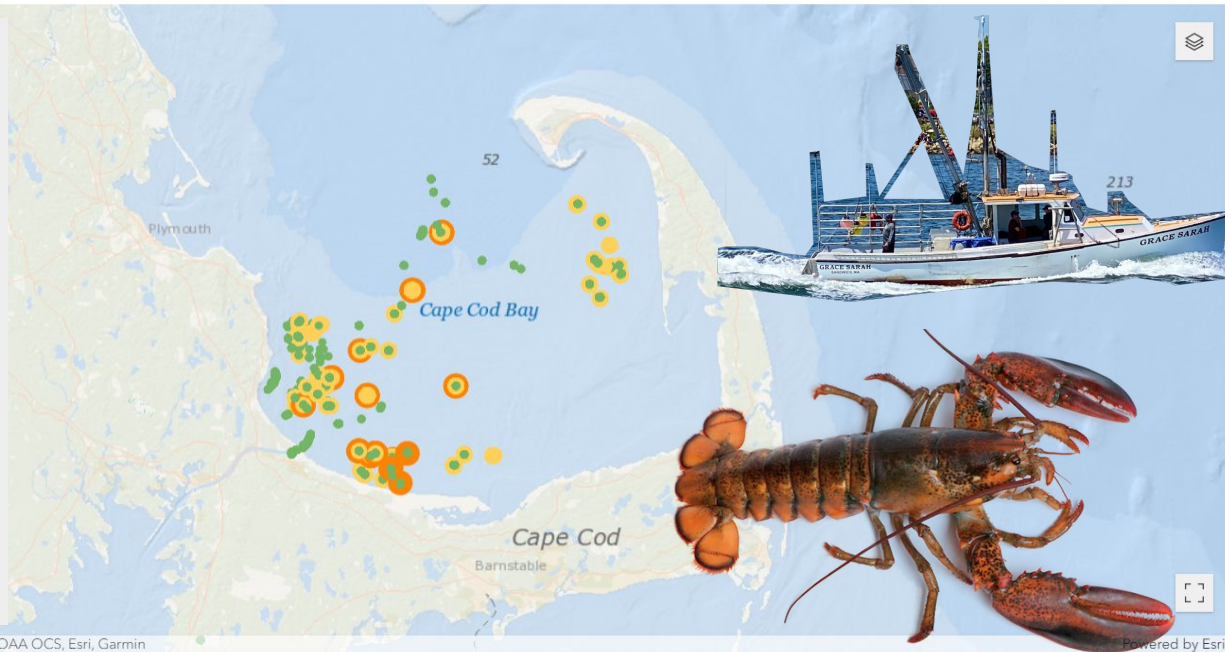






Dissolved Oxygen Readings from Cape Cod Bay Study Fleet

- F/V Grace Sarah
- F/V Buggin' Out
- F/V Margaret M
- F/V Miss Lilly
- F/V Mussel Point
- F/V Raider III
- F/V Resolve
- F/V Trap Queen



CHS, Esri, Garmin, NaturalVue | CHS, NOAA OCS, Esri, Garmin

Powered by Esri

Current Season Map

Past Seasons Data

MA Division of Marine Fisheries



eMOLT is a Team Effort





Capt. Therese
F/V Sea Anchor



Capt. Jim, JIM, and Aubrey
F/V Excalibur



Capt. Rodman
F/V Virginia Marise



George and Capt. Dominic
F/V Tyrant



Capt. Antonio
F/V Sao Paulo



Crew of the F/V Nathaniel
Lee



Capt. Andrew
F/V Miss Emma



Huanxin and Emma
F/V Sea Watcher II



LOWELL
INSTRUMENTS LLC

